

Narayanganj Poverty Reduction Strategy 2017

Ward Prioritization

Narayanganj City Corporation

Narayanganj

November 2017

Supported by:

National Urban Poverty Reduction Programme (NUPRP)

Table of Contents

Contents	Page #
Table of Contents.....	i
Executive Summary.....	1
1 Introduction.....	3
2 Poverty Indicators.....	4
3 Priority Poverty Indicators.....	4
4 Assigning weights and generate ward level index maps and data.....	6
5 Aggregate Poverty Index maps and data	9
6 Aggregate Infrastructure Index maps and data	12
7 Aggregate Livelihoods Index maps and data.....	15
8 Aggregate Land Tenure and Housing Index maps and data.....	18
9 Summary Tables for Priority Wards for Infrastructure and Livelihoods interventions....	22
10 Frequency Distribution Tables by Wards and Indicators (Unweighted)	23

Executive Summary

Given how widespread urban poverty is Bangladesh, and how complex and difficult for local government's to tackle its causes and symptoms, a strategic approach to poverty reduction is useful. A Poverty Reduction Strategy can help to provide orientation as to where a local government can begin or to prioritize their activities and investments, how to coordinate actions between government agencies, and provide a clear message to citizens that the government has the intention and plan to improve the conditions of the poor. For this reason, NUPRP is supporting municipal governments to map, quantify, and organize information about urban poor settlements in maps and tables, so as to help identify areas of greatest need and how poverty is distributed across cities. This process involves citizens and elected officials to discuss and understand the context of urban poverty in each city, and to define priority issues that need urgent attention.

In this document, the 'Narayanganj Poverty Reduction Strategy – Ward Prioritization' NUPRP has documented the results of this process. Through it local government and stakeholders met for a series of participatory workshops to develop this poverty reduction strategy. The process includes: (i) a participatory city-wide poverty mapping activity; (ii) the sharing and validation of poverty mapping data in each of the city's wards and at the city-level; (iii) a city-level workshop called the 'City Context Workshop' which shared maps and discussed them with the public; and (iv) the prioritization of city-level poverty indicators. A diverse range of stakeholders were involved throughout, they include the Mayor, counselors, key city officials, representatives of local community organizations (Community Development Committee-CDC, CDC Clusters, and CDC Town Federation), and local community surveyors. The result was the creation of a City Poverty Index that categorizes poverty levels of each of the wards into four categories, based on the relative poverty conditions. This Index visualizes varying concentrations of poverty across the city.

The categorization of the Poverty Index is based on four levels of priority, and is given by calculating the different aggregated scores of poor settlements in each ward, and also by combining important influences on poverty conditions, such as the number of urban poor, and the population density of poor settlements. The weighting of these scores is a result of a consultative process in which stakeholders prioritized the issues that define poverty in their city. For specific grants that target infrastructure and livelihoods, a separate unique index, that is narrowly focused, was created. For each of the indices, the wards of Narayanganj city are categorized into (i) 1st priority - Q1 – critical development, (ii) 2nd priority - Q2 – very low development, (iii) 3rd priority – Q3 – low development, and (iv) 4th

priority – Q4 – relatively high development. Based on this categorization, percentage of resources is then allocated in the following manner:

Priority Wards	Proposed resource allocation (%)	Agreed proportion of resource allocation (Sept.'17)
1 st Priority Wards (Critical Development)	50%	25%
2 nd Priority Wards (Very low development)	30%	50%
3 rd Priority Wards (Low development)	15%	15%
4 th Priority Wards (Relatively high development)	5%	10%
Total	100%	100%

The following table presents the priority ward lists derived through Narayanganj's Poverty Reduction Strategy process.

Priority wards of Narayanganj City Corporation

Type of activities	Priority Wards for Narayanganj			
	Critical Dev (1 st priority)	Very Low Dev (2 nd priority)	Low Dev (3 rd priority)	Relatively High Dev (4 th priority)
Infrastructure (SIF)	4, 5, 6, 10, 20, and 24	1, 3, 7, 9, 14, 25, 26, and 27	2, 8, 11, 17, 18, and 23	12, 13, 15, 16, 19, 21, and 22
Livelihood (SEF)	4, 5, 6, 10, 14, and 17	1, 3, 12, 15, 18, 20, 21, 22, and 24	9, 11, 16, 23, and 27	2, 7, 8, 13, 19, 25, and 26

The decision about the proportion of resource allocation to the different categories of priority wards was decided upon with the Narayanganj City Authority; the decision was based on understanding of the local urban context provided by the Poverty Index, as well as considering the community's demand for the specific grants, and the readiness of community organizations to manage those grants. The comparative allocations are still aligned with the priority levels so wards with the highest priority are still set to receive the highest percentage of resources. Only the wards in the 2nd priority category are considered for more budget than 1st prioritized wards because the number of active CDCs considered for grants this year under the 2nd category of wards is almost thrice than that of the 1st priority wards. This allocation is only for 2017.

1 Introduction

National Urban Poverty Reduction Programme (NUPRP) aims at improving lives and livelihoods of 6 million Urban Poor in up to 35 cities of Bangladesh. NUPRP is working directly through the local government where concerned local government will be in the driving seat and NUPRP will be supporting them to reduce poverty in their cities. In order to cover this huge population with this significant number of cities, a well-defined poverty reduction strategy is necessary to be in place to better targeting the beneficiaries and identifying the poverty hotspots for quick and fruitful actions. As a part of poverty reduction strategy, NUPRP already completed few assessments in Narayanganj city that includes (i) Participatory Mahalla and Resources Mapping, (ii) Participatory Urban Poor Settlement Mapping, (iii) Assessment of Coordination and Standing Committees, (iv) Community Development Committee (CDC) Assessment, (v) CDC Town Federation Assessment etc.

Both Mahalla and Urban Poor Settlement Mapping jointly termed as 'Poverty Mapping' were accomplished by following some rigorous participatory process where trained community people were mainly collecting the data from their respective wards and Ward Councillors were extensively involved with them throughout the process and at the end of the day when councillors were satisfied with the mapping and data collection, they endorsed the ward level maps and data which was later presented before the audiences at a city level result sharing workshop and mayor endorsed the city level poverty map and data.

Using the poverty mapping data, prioritization of wards of Narayanganj has been done for rationale and data-informed decision making with a view to targeting the neediest first and investing more resources in the poverty hotspots for a greater impact. The prioritization of wards is a part of Narayanganj Poverty Reduction Strategy.

2 Poverty Indicators

Data of 14 poverty indicators were collected for every single urban poor settlement during poverty mapping. The data presented here are the aggregate result of the settlements. Therefore, poverty mapping data do not represent the household level data. The indicators in a broad head covers infrastructure, livelihoods, and land tenure and housing. These 14 indicators are as follows:

Infrastructure Indicators

(7 indicators):

- Roads
- Drains
- Solid waste
- Sanitation
- Electricity
- Water supply
- Street lighting

Livelihood Indicators

(4 indicators):

- Employment
- Income
- Education (School attendance)
- Social problems

Land Tenure and Housing

Indicators (3 indicators):

- Housing
- Land tenure
- Eviction

Narayanganj was pilot city for this poverty mapping and at that time following two indicators were not added:

- Land Ownership
- Occupancy

3 Priority Poverty Indicators

Every city has its own sets of priorities to address city poverty. Some cities might have priority for solid waste while another city might have top priority for water supply based on the city's development needs, conditions of poor settlements, geographic location of the city and so on. Therefore, it is necessary to know the priorities for the cities that will fit while developing the poverty reduction strategy for the city.

In Narayanganj City Corporation, priority poverty indicators were determined in a session of the City Context Workshop. The main purpose of the city contexts workshop was to build consensus understanding about the city and fill in the gaps with supplementary knowledge about the city from the stakeholders. One of the session of this workshop was dedicated to defining the city-level priority poverty indicators.



Photo: City Context Workshop in Narayanganj

16 poverty indicators are divided into three categories of priority as mentioned below:

- (i) High priority indicators,
- (ii) Medium priority indicators and
- (iii) Low priority indicators.

Each of 16 poverty indicators are shown to the participants and based on the opinion of maximum people in that workshop, the indicator is put in any one of the three categories. Same process is followed for all 16 indicators and finally a list of indicators with three priority levels has been found.

City level Priority Poverty Indicators of Narayanganj City Corporation

	Top priority indicators	Medium priority indicators	Low priority indicators
Infrastructure Indicators	<ul style="list-style-type: none"> ▪ Roads ▪ Drains ▪ Water supply ▪ Solid waste 	<ul style="list-style-type: none"> ▪ Street lighting ▪ Sanitation 	<ul style="list-style-type: none"> ▪ Electricity
Livelihood Indicators	<ul style="list-style-type: none"> ▪ Employment ▪ Income ▪ Social problems 	<ul style="list-style-type: none"> ▪ Education 	
Land Tenure and Housing Indicators	<ul style="list-style-type: none"> ▪ Land tenure ▪ Eviction ▪ Housing 	<ul style="list-style-type: none"> ▪ Occupancy (<i>no data for Narayanganj</i>) 	<ul style="list-style-type: none"> ▪ Land Ownership (<i>no data for Narayanganj</i>)

4 Assigning weights and generate ward level index maps and data

Assigning weights

According to the poverty mapping scores, the settlements with the lowest scores are the poorest settlements meaning that high priority shall be given to the settlements with low scores. Therefore, when assigning the weight to the indicators, top priority indicators are assigned with lower weight and low priority indicators are assigned with higher weight. Following table presents the weight that is used for different indicators based on the priority level.

Priority	Assigned Weight
Top Priority	0.24
Medium Priority	0.31
Low Priority	0.45
Total	1.00

Creating index data sets

In order to create the index, 16 indicators are divided into three major categories if indices as mentioned below:

- **Infrastructure Index**
- **Livelihood Index**
- **Land Tenure and Housing Index**

For each of the indices, population and population density are also considered and they are also scored on a scale of 1 to 4 and these two indicators are weighted with low priority indicators. Following table shows the indicators for respective indices.

Indicators for Weighted Indices

Infrastructure Index	Livelihood Index	Land Tenure and Housing Index	Aggregate Poverty Index
<ul style="list-style-type: none"> ▪ Roads ▪ Drains ▪ Solid waste ▪ Sanitation ▪ Electricity ▪ Water supply ▪ Street lighting ▪ Population ▪ Density 	<ul style="list-style-type: none"> ▪ Employment ▪ Income ▪ Education ▪ Social problems ▪ Population ▪ Density 	<ul style="list-style-type: none"> ▪ Housing ▪ Land tenure ▪ Eviction ▪ Land Ownership ▪ Occupancy ▪ Population ▪ Density 	<ul style="list-style-type: none"> ▪ 16 indicators ▪ Population ▪ Density

Generating ward level aggregate datasets

After assigning weight to each indicator of a single settlement, the weighted score is found for that specific settlement. Then, to generate the ward level aggregate data, the average weighted value of all the settlements under a ward is calculated. This operation has been run for all 16 indicators as well as population and density data to get the weighted value of them.

Calculating the aggregate index

The ward level aggregate weighted data of the indicators then summed up to get specific index value. For example, to get the infrastructure index of a ward, values of 7 infrastructure indicators (roads, drains, solid waste, sanitation, electricity, water supply, and street lighting) and values of population and density parameters are summed up. Same process is applied for livelihood index, land tenure and housing index as well.

Formula used for Calculating Index

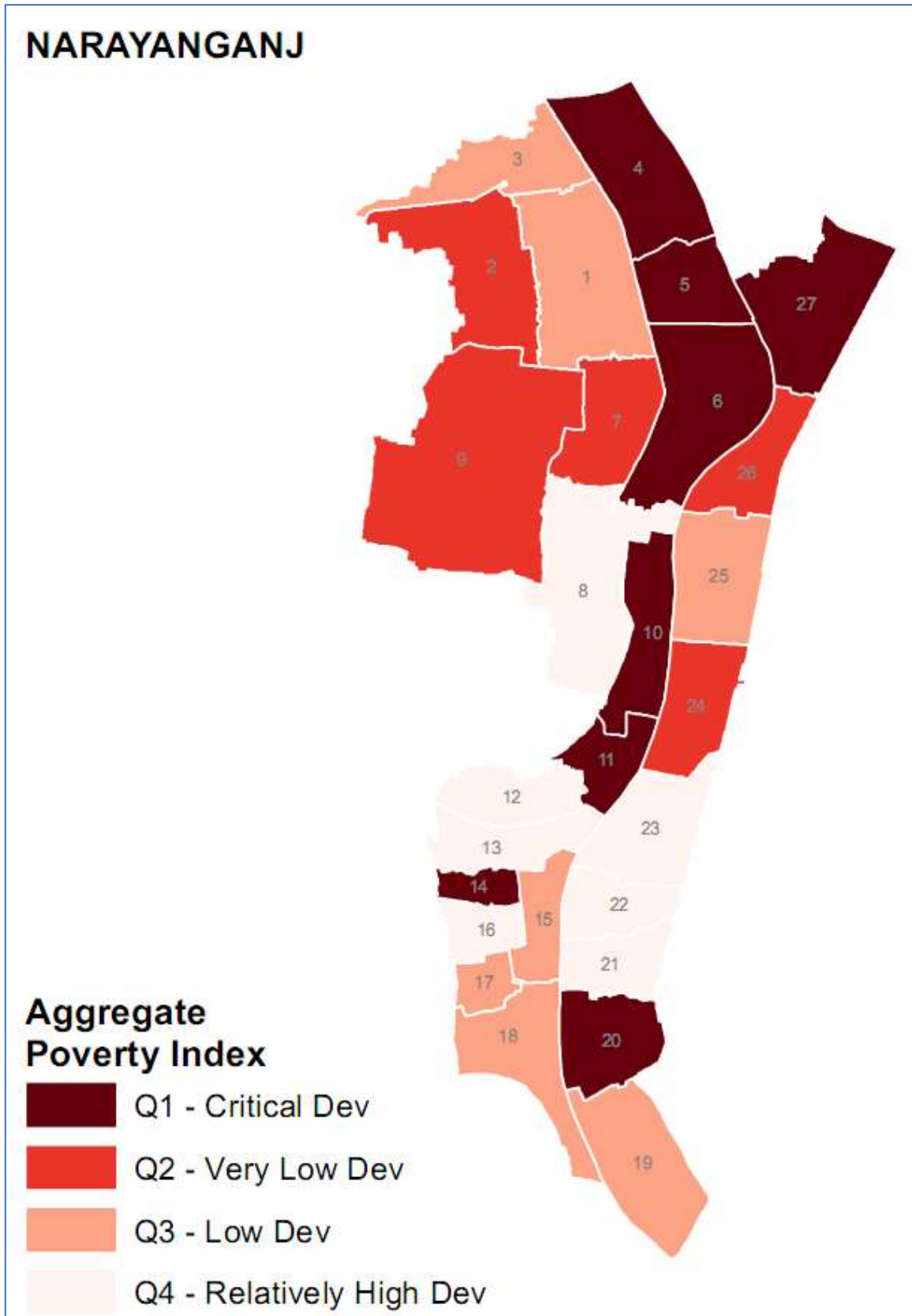
Aggregate Poverty Index = sum of weighted score of 16 indicators + weighted score of population + weighted score of pop. Density

Aggregate Infrastructure Index = sum of weighted score of 7 infrastructure indicators (Roads, Drains, Solid waste, Sanitation, Electricity, Water supply, and Street light) + weighted score of population + weighted score of pop. density

Aggregate Livelihood Index = sum of weighted score of 4 indicators (Employment, Income, Education, and Social problems) + weighted score of population + weighted score of pop. Density

Aggregate Land Tenure and Housing Index = sum of weighted score of 4 indicators (Employment, Income, Education, and Social problems) + weighted score of population + weighted score of pop. Density

5 Aggregate Poverty Index maps and data



Aggregate Poverty Index, Narayanganj

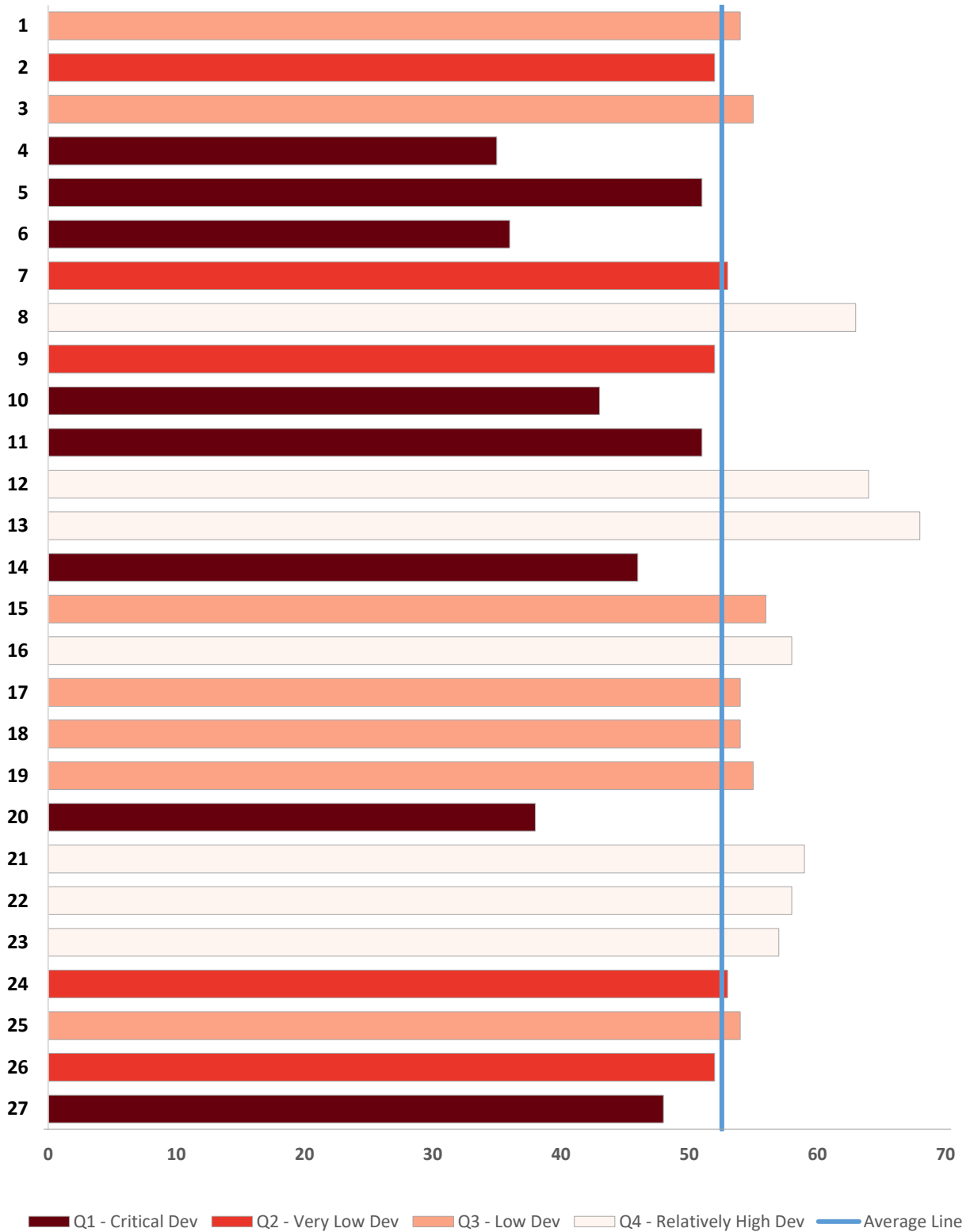
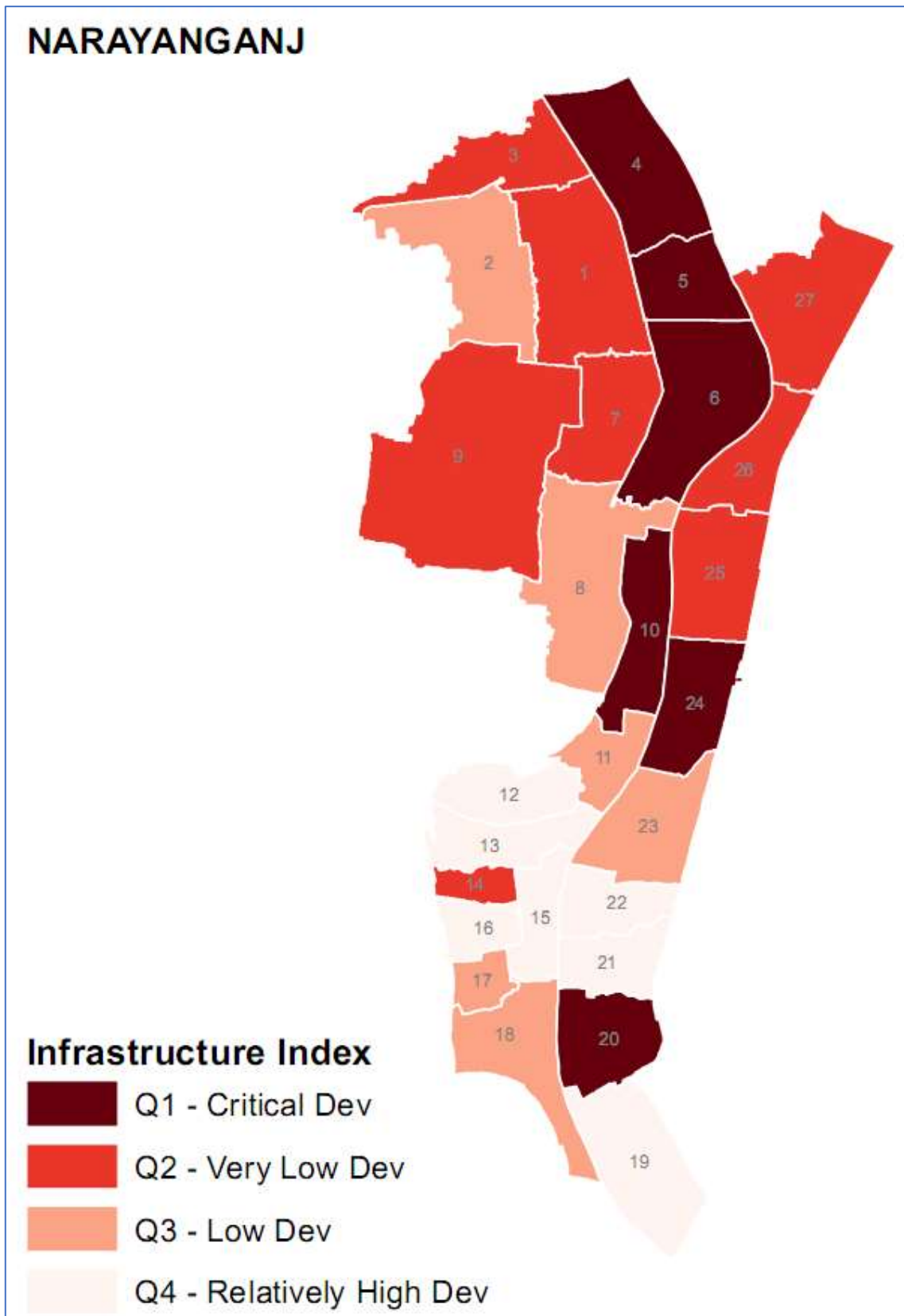


Table 01: Distribution of settlements by Ward and Weighted Poverty Index, Narayanganj

Ward	Agg. Pov. Index and Quartile		Q1 - Critical Dev				Q2 - Very Low Dev				Q3 - Low Dev				Q4 - Relatively High Dev				Total			
	pov_idx_w	pov_Q_w	# Settl	# HHs	% HHs	# Popn	# Settl	# HHs	% HHs	# Popn	# Settl	# HHs	% HHs	# Popn	# Settl	# HHs	% HHs	# Popn	# Settl	# HHs	% HHs	# Popn
1	54	Q3 - Low Dev	9	566	3%	2473	19	748	5%	3269	19	648	6%	2893	17	457	5%	2038	64	2419	4%	10673
2	52	Q2 - Very Low Dev	12	196	1%	789	17	163	1%	740	5	54	0%	241	16	191	2%	747	50	604	1%	2517
3	55	Q3 - Low Dev	1	180	1%	800	9	653	4%	3000	3	275	2%	1133	7	547	6%	1995	20	1655	3%	6928
4	35	Q1 - Critical Dev	41	2869	13%	13952	8	186	1%	750	0	0	0%	0	0	0	0%	0	49	3055	5%	14702
5	51	Q1 - Critical Dev	10	1346	6%	6785	5	476	3%	2380	3	150	1%	750	9	252	3%	1321	27	2224	4%	11236
6	36	Q1 - Critical Dev	59	1338	6%	7560	25	312	2%	1472	21	217	2%	1004	10	81	1%	375	115	1948	3%	10411
7	53	Q2 - Very Low Dev	8	120	1%	500	5	142	1%	640	12	188	2%	960	10	84	1%	342	35	534	1%	2442
8	63	Q4 - Relatively High Dev	1	17	0%	86	12	403	3%	2142	23	907	8%	4471	49	939	10%	4494	85	2266	4%	11193
9	52	Q2 - Very Low Dev	11	460	2%	1970	25	1190	8%	5015	31	763	7%	3935	12	249	3%	1173	79	2662	5%	12093
10	43	Q1 - Critical Dev	90	1467	6%	5774	69	924	6%	3690	53	1017	9%	3951	16	157	2%	583	228	3565	6%	13998
11	51	Q1 - Critical Dev	55	815	4%	3317	89	1117	8%	5581	90	856	8%	3347	48	395	4%	1443	282	3183	5%	13688
12	64	Q4 - Relatively High Dev	8	1900	8%	8650	8	287	2%	1400	14	309	3%	1344	43	1047	11%	4560	73	3543	6%	15954
13	68	Q4 - Relatively High Dev	5	663	3%	5610	1	30	0%	120	16	475	4%	1927	29	685	7%	2556	51	1853	3%	10213
14	46	Q1 - Critical Dev	14	1599	7%	6481	42	3130	21%	12542	7	199	2%	744	7	124	1%	452	70	5052	9%	20219
15	56	Q3 - Low Dev	9	2323	10%	9850	1	5	0%	19	3	199	2%	767	10	91	1%	421	23	2618	5%	11057
16	58	Q4 - Relatively High Dev	15	1715	8%	8785	13	158	1%	699	13	173	2%	704	39	440	5%	1671	80	2486	4%	11859
17	54	Q3 - Low Dev	14	555	2%	2531	18	582	4%	2811	24	752	7%	3301	27	786	8%	3082	83	2675	5%	11725
18	54	Q3 - Low Dev	27	2755	12%	11689	22	1065	7%	4161	44	1917	17%	5877	38	821	9%	2884	131	6558	11%	24611
19	55	Q3 - Low Dev	11	59	0%	256	1	5	0%	17	11	68	1%	269	17	117	1%	477	40	249	0%	1019
20	38	Q1 - Critical Dev	29	277	1%	1304	3	24	0%	94	2	23	0%	98	4	19	0%	80	38	343	1%	1576
21	59	Q4 - Relatively High Dev	5	359	2%	1900	10	704	5%	3291	9	503	4%	2439	18	202	2%	878	42	1768	3%	8508
22	58	Q4 - Relatively High Dev	6	270	1%	1295	4	129	1%	630	11	506	5%	1885	16	874	9%	3584	37	1779	3%	7394
23	57	Q4 - Relatively High Dev	2	73	0%	322	7	195	1%	787	7	149	1%	545	11	372	4%	1301	27	789	1%	2955
24	53	Q2 - Very Low Dev	5	191	1%	738	22	1213	8%	4839	14	345	3%	1638	16	311	3%	1246	57	2060	4%	8461
25	54	Q3 - Low Dev	3	15	0%	77	9	139	1%	707	5	48	0%	210	9	143	1%	587	26	345	1%	1581
26	52	Q2 - Very Low Dev	2	110	0%	700	11	181	1%	975	10	120	1%	509	3	21	0%	76	26	432	1%	2260
27	48	Q1 - Critical Dev	14	354	2%	1528	13	438	3%	1986	14	352	3%	1251	5	171	2%	787	46	1315	2%	5552

6 Aggregate Infrastructure Index maps and data



Aggregate Infrastructure Index, Narayanganj

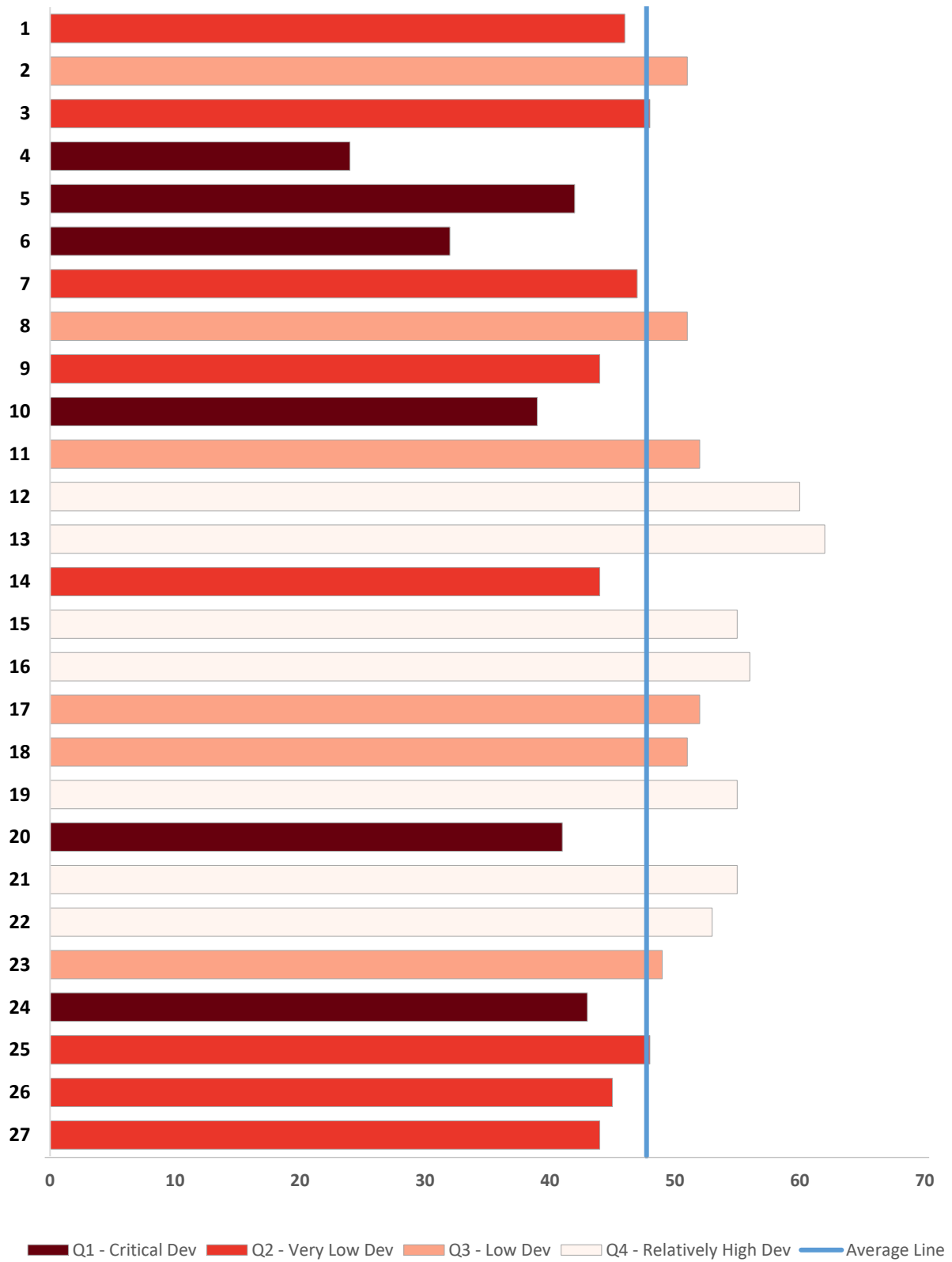
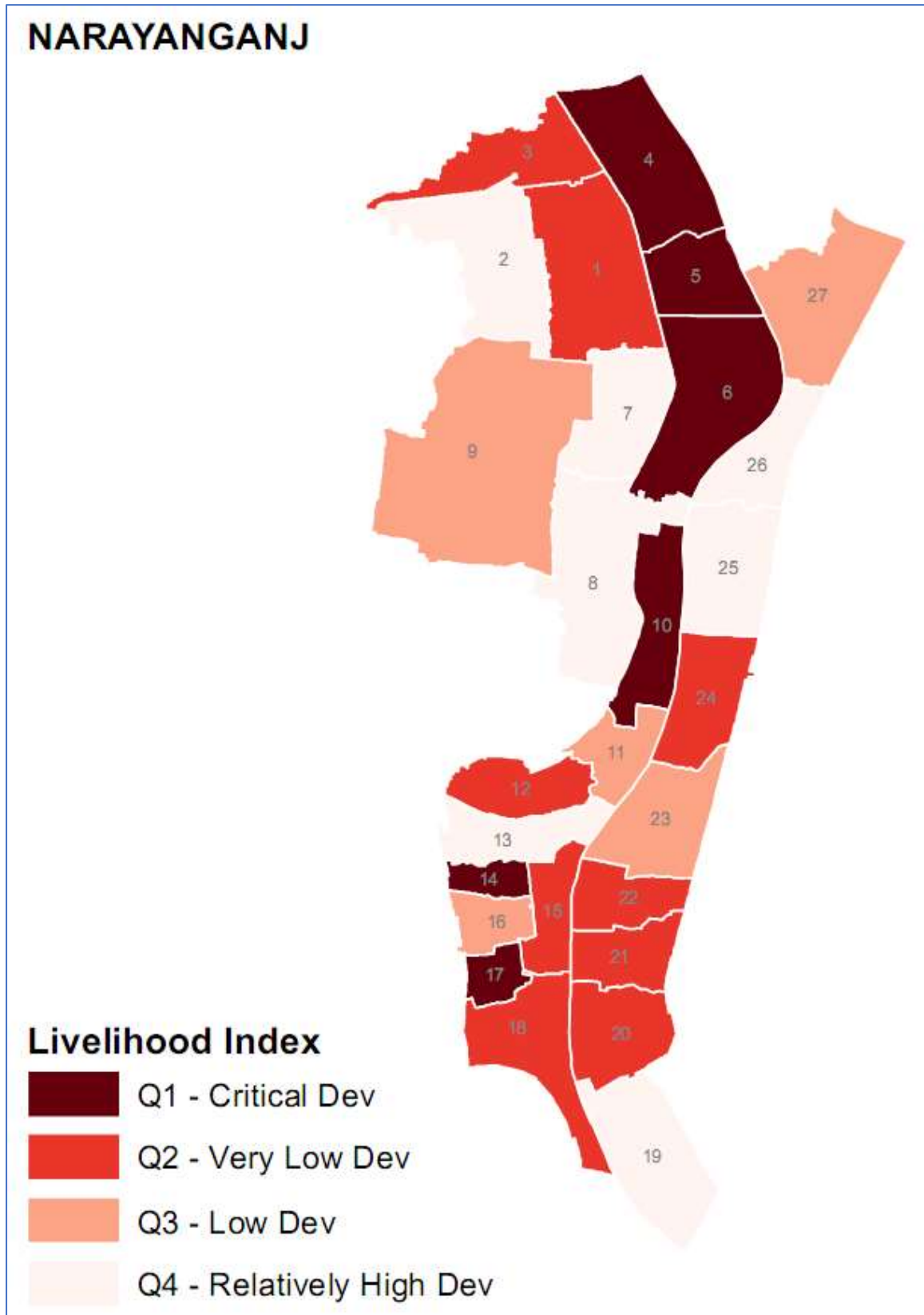


Table 02: Distribution of settlements by Ward and Weighted Infrastructure Index, Narayanganj

Ward	Agg. Infra. Index and Quartile		Q1 - Critical Dev				Q2 - Very Low Dev				Q3 - Low Dev				Q4 - Relatively High Dev				Total			
	Infra_indx_w	Infra_Q_w	# Settl	# HHs	% HHs	# Popn	# Settl	# HHs	% HHs	# Popn	# Settl	# HHs	% HHs	# Popn	# Settl	# HHs	% HHs	# Popn	# Settl	# HHs	% HHs	# Popn
1	46	Q2 - Very Low Dev	16	913	3%	4018	22	778	6%	3417	14	451	4%	1895	12	277	3%	1343	64	2419	4%	10673
2	51	Q3 - Low Dev	6	135	1%	555	18	193	2%	829	12	99	1%	455	14	177	2%	678	50	604	1%	2517
3	48	Q2 - Very Low Dev	5	610	2%	2920	7	473	4%	1913	3	105	1%	480	5	467	6%	1615	20	1655	3%	6928
4	24	Q1 - Critical Dev	45	2969	11%	14372	4	86	1%	330	0	0	0%	0	0	0	0%	0	49	3055	5%	14702
5	42	Q1 - Critical Dev	15	1822	7%	9165	1	60	0%	300	3	150	1%	750	8	192	2%	1021	27	2224	4%	11236
6	32	Q1 - Critical Dev	63	1419	5%	8004	22	242	2%	1105	22	238	2%	1067	8	49	1%	235	115	1948	3%	10411
7	47	Q2 - Very Low Dev	8	225	1%	990	9	125	1%	645	11	128	1%	570	7	56	1%	237	35	534	1%	2442
8	51	Q3 - Low Dev	12	787	3%	4121	18	427	4%	2151	31	691	6%	3228	24	361	4%	1693	85	2266	4%	11193
9	44	Q2 - Very Low Dev	23	1225	5%	5270	28	897	7%	4389	19	363	3%	1604	9	177	2%	830	79	2662	5%	12093
10	39	Q1 - Critical Dev	99	1684	6%	6857	58	777	6%	3009	56	951	8%	3563	15	153	2%	569	228	3565	6%	13998
11	52	Q3 - Low Dev	40	766	3%	3754	57	679	6%	3380	96	993	9%	3847	89	745	9%	2707	282	3183	5%	13688
12	60	Q4 - Relatively High Dev	9	2000	8%	9152	8	417	3%	1800	17	451	4%	1955	39	675	8%	3047	73	3543	6%	15954
13	62	Q4 - Relatively High Dev	5	454	2%	3254	8	459	4%	3439	11	354	3%	1352	27	586	7%	2168	51	1853	3%	10213
14	44	Q2 - Very Low Dev	18	2572	10%	10347	25	1705	14%	6924	19	631	6%	2418	8	144	2%	530	70	5052	9%	20219
15	55	Q4 - Relatively High Dev	7	1728	7%	6442	2	533	4%	2659	3	260	2%	1512	11	97	1%	444	23	2618	5%	11057
16	56	Q4 - Relatively High Dev	13	958	4%	4382	10	878	7%	4972	19	253	2%	1049	38	397	5%	1456	80	2486	4%	11859
17	52	Q3 - Low Dev	14	548	2%	2662	9	296	2%	1399	32	1274	11%	5454	28	557	7%	2210	83	2675	5%	11725
18	51	Q3 - Low Dev	30	2797	11%	11780	16	910	8%	3036	38	1556	14%	5483	47	1295	16%	4312	131	6558	11%	24611
19	55	Q4 - Relatively High Dev	4	18	0%	80	11	66	1%	269	10	59	1%	231	15	106	1%	439	40	249	0%	1019
20	41	Q1 - Critical Dev	13	171	1%	845	12	77	1%	347	10	80	1%	326	3	15	0%	58	38	343	1%	1576
21	55	Q4 - Relatively High Dev	7	499	2%	2650	8	464	4%	2081	7	475	4%	2255	20	330	4%	1522	42	1768	3%	8508
22	53	Q4 - Relatively High Dev	7	300	1%	1455	4	225	2%	840	8	511	5%	2090	18	743	9%	3009	37	1779	3%	7394
23	49	Q3 - Low Dev	3	101	0%	452	9	214	2%	791	7	165	1%	656	8	309	4%	1056	27	789	1%	2955
24	43	Q1 - Critical Dev	13	961	4%	3786	21	607	5%	2669	17	394	4%	1641	6	98	1%	365	57	2060	4%	8461
25	48	Q2 - Very Low Dev	5	93	0%	415	6	58	0%	300	8	89	1%	444	7	105	1%	422	26	345	1%	1581
26	45	Q2 - Very Low Dev	8	243	1%	1445	9	93	1%	391	3	22	0%	103	6	74	1%	321	26	432	1%	2260
27	44	Q2 - Very Low Dev	9	324	1%	1449	15	380	3%	1591	19	472	4%	1986	3	139	2%	526	46	1315	2%	5552

7 Aggregate Livelihoods Index maps and data



Aggregate Livelihood Index, Narayanganj

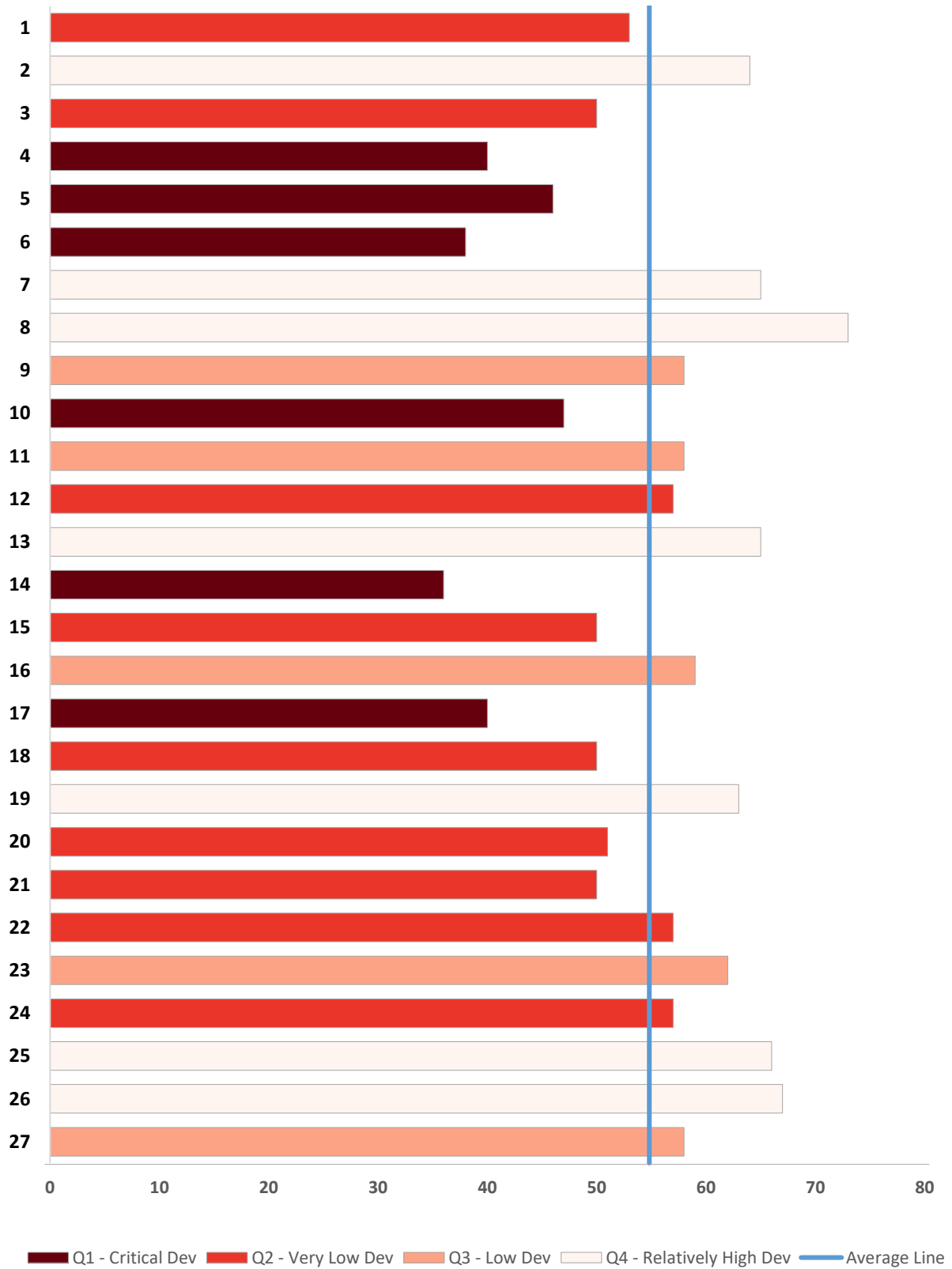
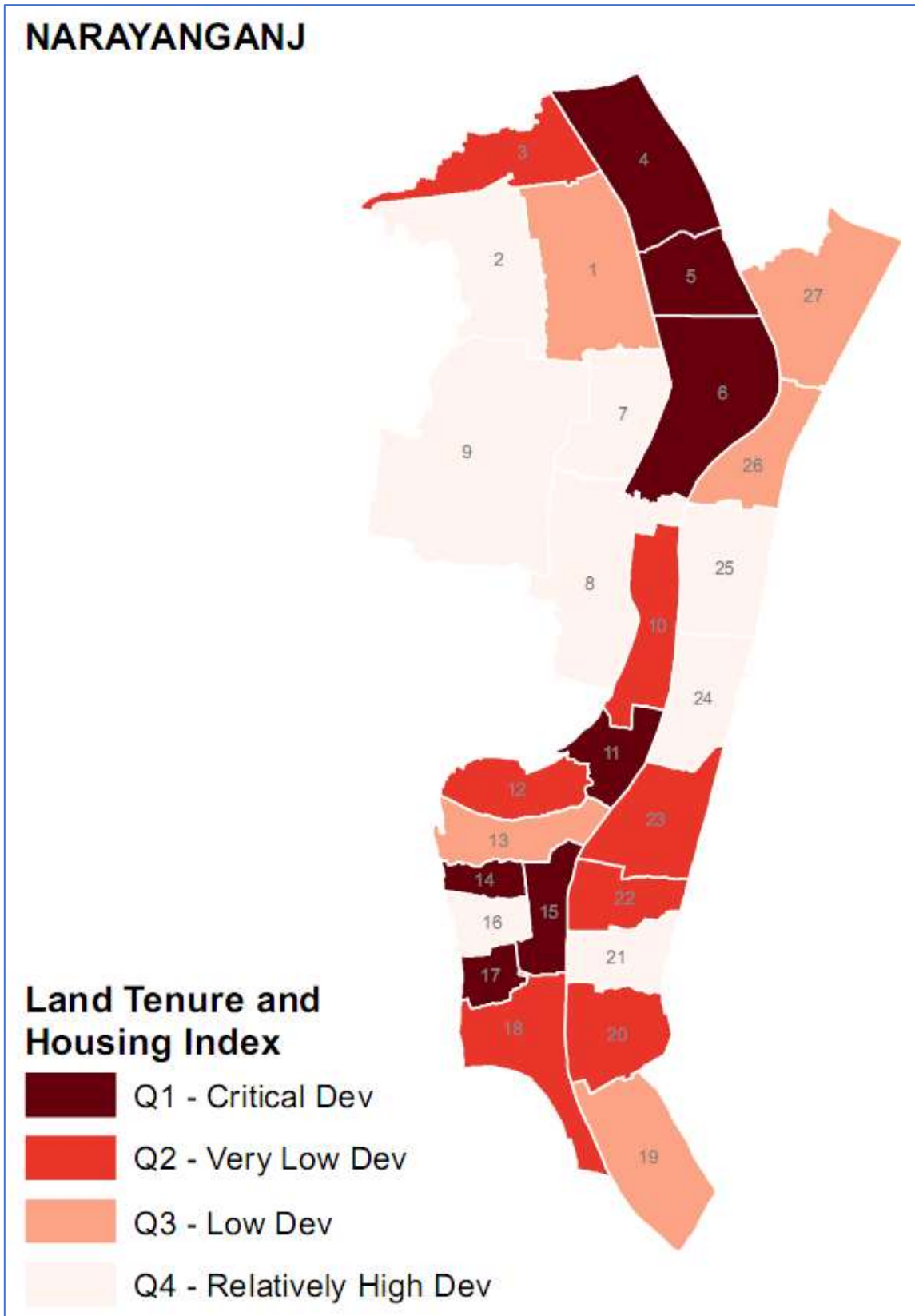


Table 03: Distribution of settlements by Ward and Weighted Livelihood Index, Narayanganj

Ward	Agg. Liv. Index and Quartile		Q1 - Critical Dev				Q2 - Very Low Dev				Q3 - Low Dev				Q4 - Relatively High Dev				Total			
	Live_idx_w	Live_Q_w	# Settl	# HHs	% HHs	# Popn	# Settl	# HHs	% HHs	# Popn	# Settl	# HHs	% HHs	# Popn	# Settl	# HHs	% HHs	# Popn	# Settl	# HHs	% HHs	# Popn
1	53	Q2 - Very Low Dev	13	731	3%	3192	21	950	7%	4244	19	554	6%	2410	11	184	3%	827	64	2419	4%	10673
2	64	Q4 - Relatively High Dev	1	80	0%	320	15	226	2%	921	15	139	2%	616	19	159	3%	660	50	604	1%	2517
3	50	Q2 - Very Low Dev	4	340	1%	1523	11	953	7%	4120	2	220	2%	814	3	142	2%	471	20	1655	3%	6928
4	40	Q1 - Critical Dev	28	2259	8%	11135	16	675	5%	3116	4	107	1%	401	1	14	0%	50	49	3055	5%	14702
5	46	Q1 - Critical Dev	13	1612	6%	8115	6	420	3%	2100	5	163	2%	890	3	29	0%	131	27	2224	4%	11236
6	38	Q1 - Critical Dev	62	1436	5%	8010	24	266	2%	1275	19	180	2%	832	10	66	1%	294	115	1948	3%	10411
7	65	Q4 - Relatively High Dev	2	28	0%	145	8	192	1%	905	11	195	2%	895	14	119	2%	497	35	534	1%	2442
8	73	Q4 - Relatively High Dev	1	42	0%	210	11	696	5%	3698	14	429	5%	2116	59	1099	18%	5169	85	2266	4%	11193
9	58	Q3 - Low Dev	14	630	2%	2760	14	505	3%	2088	25	1066	12%	4883	26	461	7%	2362	79	2662	5%	12093
10	47	Q1 - Critical Dev	70	1365	5%	5392	89	1283	9%	5099	44	623	7%	2405	25	294	5%	1102	228	3565	6%	13998
11	58	Q3 - Low Dev	40	796	3%	4366	72	862	6%	3652	80	814	9%	3165	90	711	11%	2505	282	3183	5%	13688
12	57	Q2 - Very Low Dev	12	2041	7%	9347	23	798	6%	3498	18	515	6%	2401	20	189	3%	708	73	3543	6%	15954
13	65	Q4 - Relatively High Dev	5	667	2%	5630	8	289	2%	1186	15	477	5%	1801	23	420	7%	1596	51	1853	3%	10213
14	36	Q1 - Critical Dev	48	4484	16%	17988	15	433	3%	1744	3	78	1%	291	4	57	1%	196	70	5052	9%	20219
15	50	Q2 - Very Low Dev	8	1871	7%	8013	4	686	5%	2786	2	12	0%	60	9	49	1%	198	23	2618	5%	11057
16	59	Q3 - Low Dev	14	1686	6%	8686	17	306	2%	1338	13	192	2%	730	36	302	5%	1105	80	2486	4%	11859
17	40	Q1 - Critical Dev	47	1885	7%	8453	16	412	3%	1729	15	330	4%	1333	5	48	1%	210	83	2675	5%	11725
18	50	Q2 - Very Low Dev	38	3582	13%	14595	40	1755	12%	6041	30	811	9%	2722	23	410	7%	1253	131	6558	11%	24611
19	63	Q4 - Relatively High Dev	0	0	0%	0	11	65	0%	282	13	92	1%	371	16	92	1%	366	40	249	0%	1019
20	51	Q2 - Very Low Dev	9	100	0%	448	14	150	1%	692	9	53	1%	267	6	40	1%	169	38	343	1%	1576
21	50	Q2 - Very Low Dev	15	1334	5%	6540	8	221	2%	1005	8	110	1%	478	11	103	2%	485	42	1768	3%	8508
22	57	Q2 - Very Low Dev	7	468	2%	2115	9	336	2%	1405	11	791	9%	3128	10	184	3%	746	37	1779	3%	7394
23	62	Q3 - Low Dev	1	52	0%	220	9	306	2%	1176	6	226	3%	748	11	205	3%	811	27	789	1%	2955
24	57	Q2 - Very Low Dev	4	495	2%	1877	21	955	7%	3970	17	383	4%	1696	15	227	4%	918	57	2060	4%	8461
25	66	Q4 - Relatively High Dev	1	40	0%	160	4	68	0%	344	10	136	2%	654	11	101	2%	423	26	345	1%	1581
26	67	Q4 - Relatively High Dev	1	15	0%	90	8	129	1%	630	5	141	2%	900	12	147	2%	640	26	432	1%	2260
27	58	Q3 - Low Dev	4	206	1%	1061	18	558	4%	2184	7	178	2%	696	17	373	6%	1611	46	1315	2%	5552

8 Aggregate Land Tenure and Housing Index maps and data



Aggregate Land Tenure and Housing Index, Narayanganj

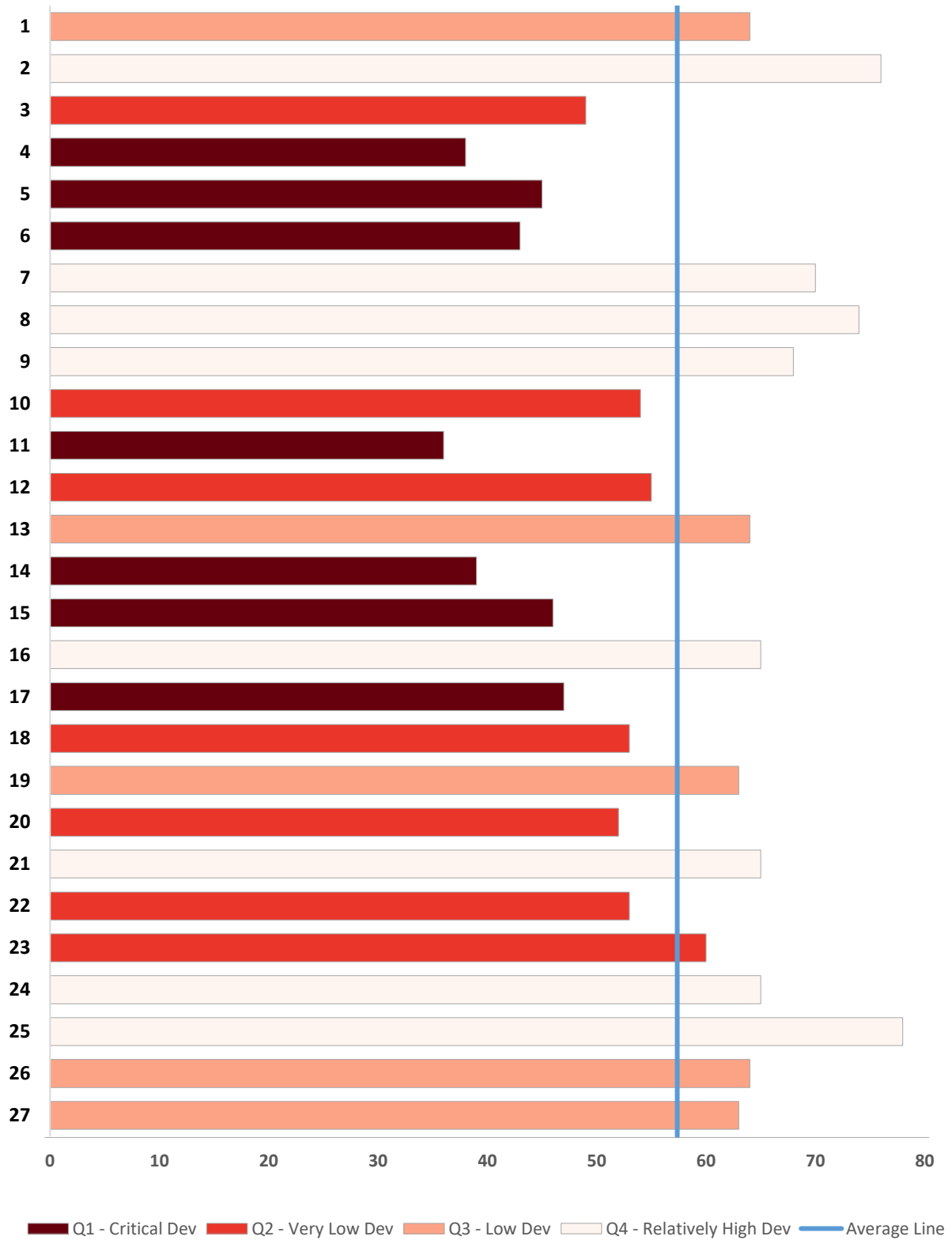
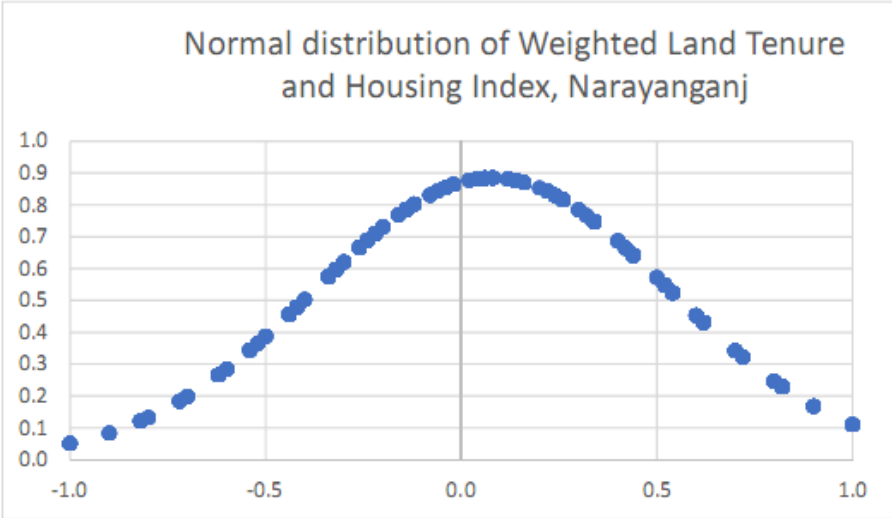
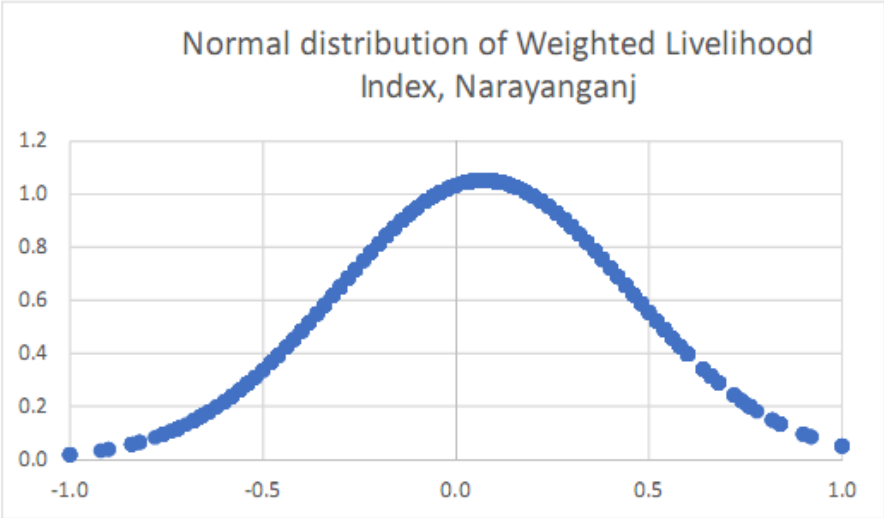
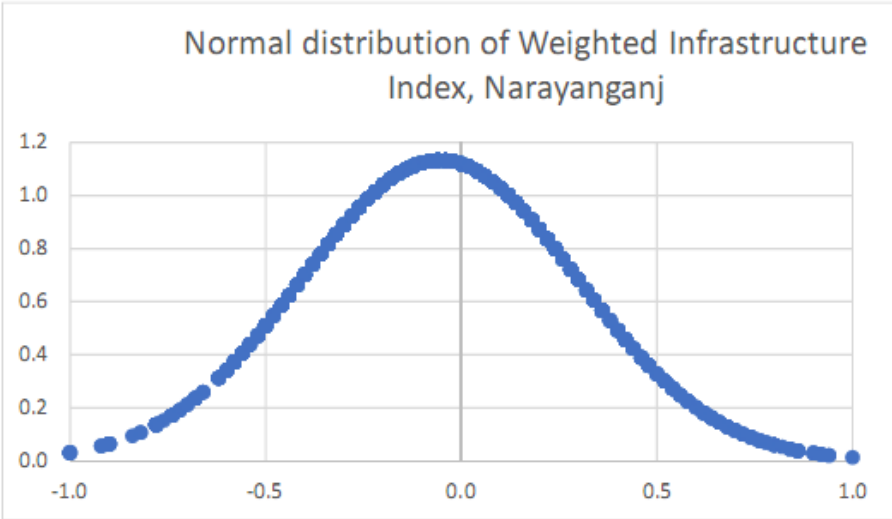
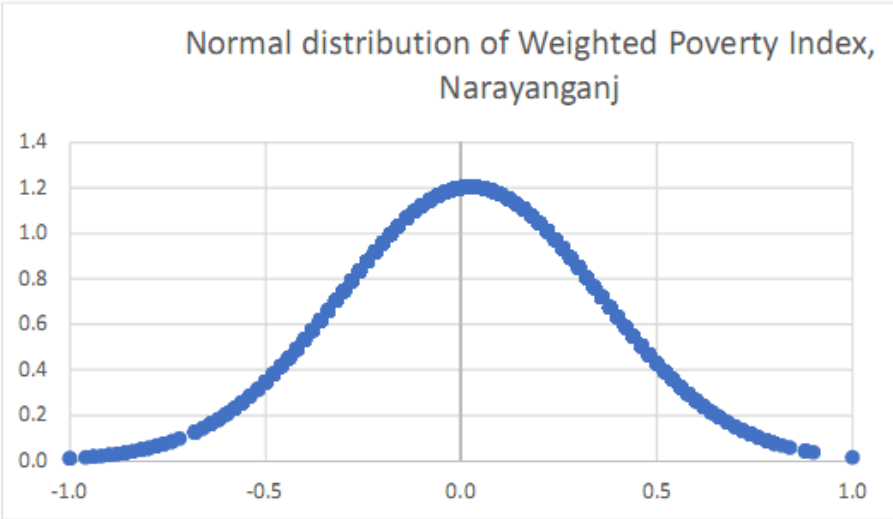


Table 04: Distribution of settlements by Ward and Weighted Land Tenure and Housing Index, Narayananj

Ward	Agg. Land-tenure and Housing Index and Quartile		Q1 - Critical Dev				Q2 - Very Low Dev				Q3 - Low Dev				Q4 - Relatively High Dev				Total			
	LH_indx_w	LH_Q_w	# Settl	# HHS	% HHS	# Popn	# Settl	# HHS	% HHS	# Popn	# Settl	# HHS	% HHS	# Popn	# Settl	# HHS	% HHS	# Popn	# Settl	# HHS	% HHS	# Popn
1	64	Q3 - Low Dev	2	105	0%	490	16	866	5%	3939	19	799	7%	3510	27	649	9%	2734	64	2419	4%	10673
2	76	Q4 - Relatively High Dev	1	80	0%	320	4	85	1%	326	12	106	1%	449	33	333	5%	1422	50	604	1%	2517
3	49	Q2 - Very Low Dev	2	265	1%	1150	13	905	6%	4099	5	485	4%	1679	0	0	0%	0	20	1655	3%	6928
4	38	Q1 - Critical Dev	28	2242	9%	11035	11	583	4%	2764	10	230	2%	903	0	0	0%	0	49	3055	5%	14702
5	45	Q1 - Critical Dev	10	1416	6%	7135	6	442	3%	2227	9	345	3%	1774	2	21	0%	100	27	2224	4%	11236
6	43	Q1 - Critical Dev	44	1163	5%	6806	33	456	3%	2139	26	240	2%	1085	12	89	1%	381	115	1948	3%	10411
7	70	Q4 - Relatively High Dev	2	54	0%	220	5	58	0%	250	11	236	2%	1107	17	186	3%	865	35	534	1%	2442
8	74	Q4 - Relatively High Dev	1	127	1%	685	11	697	4%	3601	14	400	4%	1994	59	1042	15%	4913	85	2266	4%	11193
9	68	Q4 - Relatively High Dev	5	215	1%	810	13	767	5%	3200	19	892	8%	4184	42	788	11%	3899	79	2662	5%	12093
10	54	Q2 - Very Low Dev	40	936	4%	3961	83	1552	10%	5687	58	744	7%	3052	47	333	5%	1298	228	3565	6%	13998
11	36	Q1 - Critical Dev	177	2265	9%	9046	72	690	4%	3695	23	155	1%	631	10	73	1%	316	282	3183	5%	13688
12	55	Q2 - Very Low Dev	17	2220	9%	10214	22	906	6%	4024	17	265	2%	1160	17	152	2%	556	73	3543	6%	15954
13	64	Q3 - Low Dev	4	687	3%	5770	11	401	3%	1483	14	365	3%	1474	22	400	6%	1486	51	1853	3%	10213
14	39	Q1 - Critical Dev	36	3016	12%	12148	22	1800	11%	7174	9	211	2%	796	3	25	0%	101	70	5052	9%	20219
15	46	Q1 - Critical Dev	10	2510	10%	10570	2	48	0%	233	4	21	0%	90	7	39	1%	164	23	2618	5%	11057
16	65	Q4 - Relatively High Dev	10	1666	7%	8650	12	224	1%	957	18	254	2%	1027	40	342	5%	1225	80	2486	4%	11859
17	47	Q1 - Critical Dev	26	916	4%	4206	27	1035	7%	4764	16	451	4%	1727	14	273	4%	1028	83	2675	5%	11725
18	53	Q2 - Very Low Dev	37	3182	13%	13138	20	1329	8%	4315	35	1261	12%	4400	39	786	11%	2758	131	6558	11%	24611
19	63	Q3 - Low Dev	0	0	0%	0	14	103	1%	435	17	100	1%	398	9	46	1%	186	40	249	0%	1019
20	52	Q2 - Very Low Dev	6	100	0%	478	21	153	1%	718	7	71	1%	300	4	19	0%	80	38	343	1%	1576
21	65	Q4 - Relatively High Dev	5	514	2%	2515	12	925	6%	4480	6	111	1%	542	19	218	3%	971	42	1768	3%	8508
22	53	Q2 - Very Low Dev	8	543	2%	2375	9	279	2%	1260	13	886	8%	3487	7	71	1%	272	37	1779	3%	7394
23	60	Q2 - Very Low Dev	3	93	0%	372	8	232	1%	969	6	188	2%	672	10	276	4%	942	27	789	1%	2955
24	65	Q4 - Relatively High Dev	0	0	0%	0	10	718	5%	2843	30	1064	10%	4466	17	278	4%	1152	57	2060	4%	8461
25	78	Q4 - Relatively High Dev	0	0	0%	0	0	0	0%	0	7	151	1%	696	19	194	3%	885	26	345	1%	1581
26	64	Q3 - Low Dev	3	122	0%	748	6	121	1%	637	8	105	1%	549	9	84	1%	326	26	432	1%	2260
27	63	Q3 - Low Dev	0	0	0%	0	14	468	3%	2043	21	671	6%	2792	11	176	3%	717	46	1315	2%	5552

Normal Distribution Charts



9 Summary Tables for Priority Wards for Infrastructure and Livelihood interventions

Priority Wards for SIF and SEF interventions for 2017, Narayanganj City Corporation (all 27 Wards)

Type of activities	Priority Wards for NCC			
	Critical Dev (1 st priority)	Very Low Dev (2 nd priority)	Low Dev (3 rd priority)	Relatively High Dev (4 th priority)
Infrastructure (SIF)	4	1	2	12
	5	3	8	13
	6	7	11	15
	10	9	17	16
	20	14	18	19
	24	25	23	21
		26		22
		27		
Livelihood (SEF)	4	1	9	2
	5	3	11	7
	6	12	16	8
	10	15	23	13
	14	18	27	19
	17	20		25
		21		26
		22		
	24			

Priority Wards for SIF and SEF interventions for 2017, Narayanganj City Corporation (old 9 wards)

Type of activities	Priority Wards for NCC			
	Critical Dev (1 st priority)	Very Low Dev (2 nd priority)	Low Dev (3 rd priority)	Relatively High Dev (4 th priority)
Infrastructure (SIF)	10	11	15	12
	14	17	16	13
		18		
Livelihood (SEF)	14	10	11	13
	17	15	12	16
		18		

10 Frequency Distribution Tables by Wards and Indicators (Unweighted)

Table 05: Aggregate Score of indicators by Wards (Urban Poor Settlement Mapping), Narayananj City Corporation

Ward	Poor HHs	Poor Popn	# Settlement	Settl_age	Road	Drain	Electricity	Waste	Education	Water	Toilet	Land Tenure	Housing	Eviction	Employment	Income	Social Problem	Street Light	Land Ownership	Occupancy	Total Score
1	2419	10673	64	11	1.83	1.67	3.66	1.69	3.06	1.09	3.08	3.72	2.97	3.75	2.88	1.69	3.06	1.59	no data	no data	35.73
2	604	2517	50	11	2.28	1.72	3.04	1.54	2.56	1.12	2.02	3.24	2.22	3.42	2.20	2.36	2.42	1.44			31.58
3	1655	6928	20	11	2.65	2.45	3.95	2.10	3.80	1.70	2.25	3.65	1.95	3.60	3.70	1.85	2.30	1.85			37.80
4	3055	14702	49	45	1.00	1.84	2.96	1.00	2.31	1.00	1.78	3.37	1.14	3.18	2.88	2.10	3.02	1.00			28.57
5	2224	11236	27	73	2.33	2.33	3.96	1.07	3.15	1.11	2.41	3.11	2.89	3.15	3.30	3.19	1.74	2.37			36.11
6	1948	10411	115	43	1.52	1.62	2.90	1.01	2.43	1.83	1.44	2.91	1.75	2.63	2.31	1.82	1.84	1.68			27.69
7	534	2442	35	27	1.40	1.40	3.54	1.46	3.40	1.09	2.80	3.26	2.80	3.03	2.86	2.03	2.63	1.23			32.91
8	2266	11193	85	37	1.60	1.42	3.51	1.16	3.25	3.19	2.94	3.58	3.52	3.78	3.49	3.38	3.64	1.22			39.67
9	2662	12093	79	50	2.16	1.37	3.04	1.23	2.48	1.09	2.70	3.24	3.24	3.52	2.77	3.08	2.38	1.63			33.92
10	3565	13998	228	60	1.46	1.65	2.91	1.47	2.28	1.81	2.14	2.39	2.50	3.26	2.25	2.25	2.36	1.37			30.11
11	3183	13688	282	57	2.11	1.89	3.69	1.61	3.38	3.05	2.80	1.88	1.24	1.89	3.24	2.85	2.69	1.80			34.13
12	3543	15954	73	89	2.15	1.95	3.66	2.99	3.60	3.30	3.07	3.48	2.58	3.45	2.97	2.16	3.41	2.85			41.62
13	1853	10213	51	40	2.84	2.73	3.86	2.37	3.20	2.76	2.75	3.51	2.92	3.59	3.55	3.61	2.86	2.20			42.75
14	5052	20219	70	55	2.13	1.77	3.79	2.03	2.33	1.94	2.16	2.90	1.94	3.16	2.41	2.16	2.53	2.70			33.94
15	2618	11057	23	60	3.00	2.43	3.65	2.26	3.22	2.74	2.17	2.70	2.00	3.09	3.09	1.91	2.83	2.61			37.70
16	2486	11859	80	76	2.64	1.74	3.39	1.79	2.53	2.06	2.45	3.20	2.53	3.48	2.75	2.66	2.95	2.76			36.91
17	2675	11725	83	69	2.52	2.41	3.90	1.49	3.07	3.06	2.77	3.02	2.67	3.35	2.43	1.59	2.42	2.36			37.08
18	6558	24611	131	43	2.11	2.14	3.73	1.47	2.62	2.17	2.94	3.11	2.57	3.14	2.63	2.43	3.08	2.24			36.37
19	249	1019	40	30	2.28	2.20	3.45	1.00	2.70	2.33	2.05	2.98	1.70	3.03	2.48	2.33	3.30	2.33			34.13
20	343	1576	38	20	1.76	1.68	2.92	1.13	2.29	1.47	1.50	2.08	1.61	1.95	1.95	1.84	2.11	1.42			25.71
21	1768	8508	42	41	2.43	2.57	3.81	1.52	2.67	2.52	2.88	3.55	3.38	3.69	2.67	2.31	2.38	2.07			38.45
22	1779	7394	37	28	2.16	2.08	3.59	2.27	3.32	3.24	2.38	2.95	2.51	3.19	3.14	2.97	2.54	2.00			38.35
23	789	2955	27	11	2.04	1.56	3.74	1.52	3.37	2.19	2.44	3.26	2.48	3.63	3.11	3.07	2.89	2.00			37.30
24	2060	8461	57	11	1.65	1.42	3.30	1.14	3.23	2.30	2.74	3.67	3.05	3.42	2.93	2.21	2.79	1.16			35.00
25	345	1581	26	11	1.69	1.54	3.08	1.15	3.12	2.69	1.58	3.19	3.00	3.65	2.35	2.35	2.65	1.35			33.38
26	432	2260	26	43	1.73	1.38	3.27	1.27	3.12	1.00	1.35	3.08	1.92	3.35	3.12	3.73	1.88	2.54			32.73
27	1315	5552	46	63	1.98	1.59	3.28	1.17	2.76	1.15	2.35	2.63	2.46	3.20	2.30	2.50	2.48	1.15			31.00
Total	57980	254825	1884	41	2.05	1.87	3.47	1.55	2.93	2.04	2.37	3.10	2.43	3.24	2.81	2.46	2.64	1.89			35

Table 06: Distribution of type of settlements by Wards (Urban Poor Settlement Mapping), Narayanganj City Corporation

Ward	Extremely Poor				Very Poor				Moderately Poor				Marginally Poor				Better Off/ Not-Poor				Total			
	# Settl	# HHs	% HHs	# Popn	# Settl	# HHs	% HHs	# Popn	# Settl	# HHs	% HHs	# Popn	# Settl	# HHs	% HHs	# Popn	# Settl	# HHs	% HHs	# Popn	# Settl	# HHs	% HHs	# Popn
1	2	105	1%	490	28	1216	5%	5270	33	1080	6%	4819	1	18	0%	94	0	0	0%	0	64	2419	4%	10673
2	10	87	1%	379	25	318	1%	1385	15	199	1%	753	0	0	0%	0	0	0	0%	0	50	604	1%	2517
3	0	0	0%	0	9	793	3%	3610	7	407	2%	1739	4	455	11%	1579	0	0	0%	0	20	1655	3%	6928
4	5	402	4%	2133	44	2653	10%	12569	0	0	0%	0	0	0	0%	0	0	0	0%	0	49	3055	5%	14702
5	1	135	1%	675	12	1477	5%	7440	9	450	3%	2231	5	162	4%	890	0	0	0%	0	27	2224	4%	11236
6	54	1234	13%	7143	36	460	2%	2051	24	244	1%	1177	1	10	0%	40	0	0	0%	0	115	1948	3%	10411
7	6	46	0%	205	13	271	1%	1163	15	207	1%	1029	1	10	0%	45	0	0	0%	0	35	534	1%	2442
8	0	0	0%	0	17	411	2%	2063	61	1696	10%	8325	7	159	4%	805	0	0	0%	0	85	2266	4%	11193
9	5	265	3%	1050	45	1546	6%	6815	28	829	5%	4098	1	22	1%	130	0	0	0%	0	79	2662	5%	12093
10	55	899	9%	3379	111	1503	6%	6087	61	1148	7%	4471	1	15	0%	61	0	0	0%	0	228	3565	6%	13998
11	18	310	3%	1035	144	1618	6%	7380	114	1200	7%	4999	6	55	1%	274	0	0	0%	0	282	3183	5%	13688
12	4	1665	18%	7150	8	317	1%	1854	38	790	5%	3511	23	771	19%	3439	0	0	0%	0	73	3543	6%	15954
13	2	376	4%	2840	5	324	1%	2918	23	615	4%	2482	20	532	13%	1952	1	6	55%	21	51	1853	3%	10213
14	2	101	1%	402	53	4461	17%	17940	14	455	3%	1747	1	35	1%	130	0	0	0%	0	70	5052	9%	20219
15	5	478	5%	1892	6	1856	7%	8001	3	198	1%	759	8	81	2%	375	1	5	45%	30	23	2618	5%	11057
16	11	885	9%	4050	24	1026	4%	5575	29	410	2%	1691	16	165	4%	543	0	0	0%	0	80	2486	4%	11859
17	2	105	1%	460	31	929	3%	4269	42	1368	8%	5899	8	273	7%	1097	0	0	0%	0	83	2675	5%	11725
18	11	1762	19%	7433	43	1969	7%	7739	64	2479	14%	8279	13	348	9%	1160	0	0	0%	0	131	6558	11%	24611
19	11	59	1%	256	2	13	0%	41	21	117	1%	487	6	60	2%	235	0	0	0%	0	40	249	0%	1019
20	23	208	2%	961	11	116	0%	535	4	19	0%	80	0	0	0%	0	0	0	0%	0	38	343	1%	1576
21	3	110	1%	565	8	429	2%	2191	25	1168	7%	5533	6	61	2%	219	0	0	0%	0	42	1768	3%	8508
22	1	35	0%	185	12	330	1%	1605	17	866	5%	3384	7	548	14%	2220	0	0	0%	0	37	1779	3%	7394
23	0	0	0%	0	10	277	1%	1143	13	313	2%	1150	4	199	5%	662	0	0	0%	0	27	789	1%	2955
24	1	8	0%	31	33	1368	5%	5520	23	684	4%	2910	0	0	0%	0	0	0	0%	0	57	2060	4%	8461
25	3	15	0%	77	15	194	1%	952	6	117	1%	476	2	19	0%	76	0	0	0%	0	26	345	1%	1581
26	0	0	0%	0	22	403	1%	2144	4	29	0%	116	0	0	0%	0	0	0	0%	0	26	432	1%	2260
27	11	177	2%	700	24	714	3%	2993	11	424	2%	1859	0	0	0%	0	0	0	0%	0	46	1315	2%	5552
Total	246	9467	100%	43491	791	26992	100%	121253	704	17512	100%	74004	141	3998	100%	16026	2	11	100%	51	1884	57980	100%	254825

Aggregated Information of the Poverty Indicators by Ward, Narayanganj

Table 7: Condition of Road by ward

Ward	Road											
	Critical Dev. (score 1)			Very Low Dev. (score 2)			Medium Dev. (Score 3)			High Devt. (score 4)		
	# Settl	# HHs	% HHs	# Settl	# HHs	% HHs	# Settl	# HHs	% HHs	# Settl	# HHs	% HHs
1	26	1169	5%	29	977	5%	3	138	2%	6	135	2%
2	16	153	1%	14	141	1%	10	157	3%	10	153	2%
3	2	95	0%	9	590	3%	3	325	6%	6	645	8%
4	49	3055	13%									
5	9	722	3%	9	1180	6%				9	322	4%
6	76	1479	6%	26	321	2%	5	58	1%	8	90	1%
7	25	420	2%	8	84	0%				2	30	0%
8	53	1730	7%	21	320	2%	3	45	1%	8	171	2%
9	19	533	2%	42	1722	9%	4	103	2%	14	304	4%
10	158	2133	9%	51	1204	6%	4	65	1%	15	163	2%
11	124	1454	6%	68	802	4%	25	226	4%	65	701	8%
12	31	2266	10%	16	655	3%	10	348	6%	16	274	3%
13	6	114	0%	20	1056	5%	1	22	0%	24	661	8%
14	12	1515	6%	43	2517	12%	9	868	15%	6	152	2%
15	4	86	0%	4	1032	5%	3	19	0%	12	1481	17%
16	16	873	4%	15	270	1%	31	1153	21%	18	190	2%
17	18	641	3%	26	900	4%	17	497	9%	22	637	8%
18	36	1280	5%	67	4122	20%	6	234	4%	22	922	11%
19	18	97	0%	6	33	0%	3	21	0%	13	98	1%
20	18	195	1%	12	80	0%	7	62	1%	1	6	0%
21	15	738	3%	9	159	1%	3	220	4%	15	651	8%
22	14	415	2%	11	995	5%	4	63	1%	8	306	4%
23	12	327	1%	6	171	1%	5	144	3%	4	147	2%
24	35	1317	6%	10	387	2%	9	305	5%	3	51	1%
25	12	128	1%	11	140	1%	2	68	1%	1	9	0%
26	17	296	1%	1	40	0%	6	61	1%	2	35	0%
27	18	411	2%	14	337	2%	11	411	7%	3	156	2%
Total	839	23642	100%	548	20235	100%	184	5613	100%	313	8490	100%

Aggregated Information of the Poverty Indicators by Ward, Narayanganj

Table 8: Condition of Drain by ward

Ward	Drain											
	Critical Dev. (score 1)			Very Low Dev. (score 2)			Medium Dev. (Score 3)			High Devt. (score 4)		
	# Settl	# HHs	% HHs	# Settl	# HHs	% HHs	# Settl	# HHs	% HHs	# Settl	# HHs	% HHs
1	42	1703	5%	7	215	2%	9	296	4%	6	205	2%
2	34	398	1%	5	45	1%	2	20	0%	9	141	2%
3	9	775	2%				4	302	4%	7	578	7%
4	8	394	1%	41	2661	30%						
5	14	1081	3%	1	60	1%	1	600	8%	11	483	6%
6	87	1602	5%	5	70	1%	3	57	1%	20	219	3%
7	30	470	1%				1	15	0%	4	49	1%
8	66	1808	5%	10	243	3%	1	9	0%	8	206	2%
9	63	2228	7%	9	189	2%	1	15	0%	6	230	3%
10	130	1812	5%	68	1366	15%	9	109	2%	21	278	3%
11	170	2012	6%	34	370	4%	18	176	2%	60	625	7%
12	42	2837	8%	10	411	5%	4	51	1%	17	244	3%
13	18	691	2%	3	59	1%	5	450	6%	25	653	8%
14	40	3220	10%	12	509	6%	12	1157	16%	6	166	2%
15	10	1639	5%	1	5	0%	4	652	9%	8	322	4%
16	46	856	3%	16	176	2%	11	1381	19%	7	73	1%
17	32	1096	3%	15	455	5%	6	132	2%	30	992	12%
18	62	3744	11%	25	602	7%	8	445	6%	36	1767	21%
19	18	96	0%	9	57	1%				13	96	1%
20	21	183	1%	9	93	1%	7	43	1%	1	24	0%
21	11	467	1%	12	400	5%	3	249	3%	16	652	8%
22	20	847	3%	1	18	0%	9	684	10%	7	230	3%
23	19	480	1%	4	182	2%	1	20	0%	3	107	1%
24	42	1729	5%	10	206	2%	1	46	1%	4	79	1%
25	19	208	1%	3	50	1%	1	38	1%	3	49	1%
26	22	376	1%	1	6	0%				3	50	1%
27	27	683	2%	13	372	4%	4	208	3%	2	52	1%
Total	1102	33435	100%	324	8820	100%	125	7155	100%	333	8570	100%

Aggregated Information of the Poverty Indicators by Ward, Narayanganj

Table 9: Status of electricity connection by ward

Ward	Electricity											
	Critical Dev. (score 1)			Very Low Dev. (score 2)			Medium Dev. (Score 3)			High Devt. (score 4)		
	# Settl	# HHs	% HHs	# Settl	# HHs	% HHs	# Settl	# HHs	% HHs	# Settl	# HHs	% HHs
1	1	35	2%	1	19	0%	17	653	4%	45	1712	5%
2	4	33	2%	9	95	2%	18	157	1%	19	319	1%
3							1	100	1%	19	1555	5%
4	1	27	1%	1	30	1%	46	2991	17%	1	7	0%
5							1	82	0%	26	2142	6%
6	24	702	33%	5	140	3%	45	567	3%	41	539	2%
7							16	238	1%	19	296	1%
8	1	7	0%				39	1191	7%	45	1068	3%
9	2	30	1%	17	678	13%	36	1209	7%	24	745	2%
10	18	327	15%	19	198	4%	156	2542	14%	35	498	2%
11	5	59	3%	2	17	0%	69	930	5%	206	2177	7%
12	1	13	1%	5	1615	32%	12	680	4%	55	1235	4%
13	1	26	1%	1	32	1%	2	15	0%	47	1780	5%
14				2	272	5%	11	950	5%	57	3830	12%
15	2	639	30%				2	258	1%	19	1721	5%
16	2	115	5%	16	331	7%	11	155	1%	51	1885	6%
17							8	207	1%	75	2468	7%
18	1	19	1%	7	1357	27%	18	878	5%	105	4304	13%
19	4	18	1%	2	12	0%	6	34	0%	28	185	1%
20	2	10	0%	7	62	1%	21	190	1%	8	81	0%
21							8	342	2%	34	1426	4%
22	2	25	1%	2	40	1%	5	239	1%	28	1475	4%
23	1	55	3%				4	61	0%	22	673	2%
24				4	124	2%	32	1554	9%	21	382	1%
25	3	15	1%	1	5	0%	13	217	1%	9	108	0%
26							19	352	2%	7	80	0%
27							33	869	5%	13	446	1%
Total	75	2155	100%	101	5027	100%	649	17661	100%	1059	33137	100%

Aggregated Information of the Poverty Indicators by Ward, Narayanganj

Table 10: Status of solid waste anagement by ward

Ward	Solid waste management											
	Critical Dev. (score 1)			Very Low Dev. (score 2)			Medium Dev. (Score 3)			High Devt. (score 4)		
	# Settl	# HHs	% HHs	# Settl	# HHs	% HHs	# Settl	# HHs	% HHs	# Settl	# HHs	% HHs
1	44	1744	5%	5	169	2%	6	110	3%	9	396	8%
2	31	391	1%	14	108	1%	2	73	2%	3	32	1%
3	7	563	1%	8	785	7%	1	12	0%	4	295	6%
4	49	3055	8%									
5	25	2132	6%	2	92	1%						
6	114	1913	5%	1	35	0%						
7	29	473	1%	1	20	0%				5	41	1%
8	78	2175	6%	2	25	0%	3	44	1%	2	22	0%
9	71	2502	6%				6	98	3%	2	62	1%
10	158	2064	5%	38	802	7%	27	645	18%	5	54	1%
11	156	1828	5%	90	1038	9%	27	241	7%	9	76	2%
12	14	1940	5%	12	391	3%	8	284	8%	39	928	20%
13	19	1114	3%	10	363	3%	6	100	3%	16	276	6%
14	12	1553	4%	49	3005	27%	4	366	10%	5	128	3%
15	11	1635	4%	1	90	1%	5	860	25%	6	33	1%
16	39	1235	3%	22	276	2%	16	178	5%	3	797	17%
17	54	1634	4%	21	790	7%	4	63	2%	4	188	4%
18	91	4765	12%	25	876	8%	8	267	8%	7	650	14%
19	40	249	1%									
20	35	328	1%	1	5	0%	2	10	0%			
21	22	935	2%	19	818	7%				1	15	0%
22	13	391	1%	11	943	8%	3	77	2%	10	368	8%
23	19	491	1%	4	115	1%	2	48	1%	2	135	3%
24	50	1736	5%	6	291	3%	1	33	1%			
25	22	235	1%	4	110	1%						
26	23	382	1%	1	13	0%				2	37	1%
27	42	1075	3%	2	104	1%				2	136	3%
Total	1268	38538	100%	349	11264	100%	131	3509	100%	136	4669	100%

Aggregated Information of the Poverty Indicators by Ward, Narayanganj

Table 11: Status of water supply by ward

Ward	Water supply											
	Critical Dev. (score 1)			Very Low Dev. (score 2)			Medium Dev. (Score 3)			High Devt. (score 4)		
	# Settl	# HHs	% HHs	# Settl	# HHs	% HHs	# Settl	# HHs	% HHs	# Settl	# HHs	% HHs
1	62	2339	7%							2	80	1%
2	47	572	2%	1	5	0%	1	22	0%	1	5	0%
3	14	1163	4%	2	180	2%				4	312	3%
4	49	3055	10%									
5	26	2215	7%							1	9	0%
6	75	1465	5%	6	151	2%	13	149	2%	21	183	2%
7	34	512	2%							1	22	0%
8	13	230	1%	3	200	3%	24	768	9%	45	1068	11%
9	76	2591	8%				2	31	0%	1	40	0%
10	88	1284	4%	96	1365	19%	43	899	10%	1	17	0%
11	16	321	1%	41	442	6%	139	1461	17%	86	959	10%
12	11	1980	6%	1	5	0%	16	400	5%	45	1158	12%
13	10	282	1%	7	277	4%	19	455	5%	15	839	8%
14	15	2147	7%	44	2229	31%	11	676	8%			
15	8	1734	5%	1	5	0%	3	199	2%	11	680	7%
16	28	1814	6%	32	397	5%	7	101	1%	13	174	2%
17	9	313	1%	8	224	3%	35	1190	14%	31	948	10%
18	64	4107	13%	11	413	6%	26	1367	16%	30	671	7%
19	19	109	0%	3	17	0%	4	23	0%	14	100	1%
20	27	252	1%	6	53	1%	3	27	0%	2	11	0%
21	13	580	2%	6	550	8%	11	200	2%	12	438	4%
22	1	30	0%	7	212	3%	11	302	3%	18	1235	12%
23	14	289	1%	2	118	2%	3	84	1%	8	298	3%
24	25	1088	3%	9	393	5%	4	127	1%	19	452	5%
25	6	83	0%	4	29	0%	8	165	2%	8	68	1%
26	26	432	1%									
27	43	1142	4%	1	42	1%				2	131	1%
Total	819	32129	100%	291	7307	100%	383	8646	100%	391	9898	100%

Aggregated Information of the Poverty Indicators by Ward, Narayanganj

Table 12: Sanitation status by ward

Ward	Sanitation											
	Critical Dev. (score 1)			Very Low Dev. (score 2)			Medium Dev. (Score 3)			High Devt. (score 4)		
	# Settl	# HHs	% HHs	# Settl	# HHs	% HHs	# Settl	# HHs	% HHs	# Settl	# HHs	% HHs
1	3	154	1%	12	563	4%	26	911	6%	23	791	8%
2	19	161	1%	18	278	2%	6	46	0%	7	119	1%
3	5	535	3%	8	503	3%	4	227	2%	3	390	4%
4	20	1318	7%	20	1357	9%	9	380	3%			
5	5	956	5%	11	775	5%	6	331	2%	5	162	2%
6	85	1516	8%	17	312	2%	5	55	0%	8	65	1%
7	8	91	0%	4	146	1%	10	166	1%	13	131	1%
8	12	318	2%	17	315	2%	20	455	3%	36	1178	12%
9	11	193	1%	25	719	5%	20	855	6%	23	895	9%
10	70	1055	6%	64	844	6%	86	1552	11%	8	114	1%
11	40	427	2%	58	768	5%	101	1129	8%	83	859	9%
12	14	1901	10%	6	175	1%	14	536	4%	39	931	9%
13	9	738	4%	9	295	2%	19	560	4%	14	260	3%
14	18	2278	12%	23	1598	11%	29	1176	8%			
15	13	2345	13%	1	187	1%	1	5	0%	8	81	1%
16	21	1619	9%	18	260	2%	25	425	3%	16	182	2%
17	8	303	2%	23	751	5%	32	857	6%	20	764	8%
18	8	274	1%	40	2814	19%	35	1960	13%	48	1510	15%
19	19	99	1%	4	27	0%	13	78	1%	4	45	0%
20	25	245	1%	9	68	0%	2	22	0%	2	8	0%
21	8	437	2%	7	440	3%	9	587	4%	18	304	3%
22	13	458	2%	5	230	2%	11	655	4%	8	436	4%
23	5	121	1%	8	258	2%	11	297	2%	3	113	1%
24	3	117	1%	19	670	4%	25	1107	8%	10	166	2%
25	15	140	1%	8	127	1%	2	68	0%	1	10	0%
26	22	399	2%	1	8	0%	1	7	0%	2	18	0%
27	9	366	2%	22	497	3%	5	141	1%	10	311	3%
Total	488	18564	100%	457	14985	100%	527	14588	100%	412	9843	100%

Aggregated Information of the Poverty Indicators by Ward, Narayanganj

Table 13: Status of street light by ward

Ward	Street Light											
	Critical Dev. (score 1)			Very Low Dev. (score 2)			Medium Dev. (Score 3)			High Devt. (score 4)		
	# Settl	# HHs	% HHs	# Settl	# HHs	% HHs	# Settl	# HHs	% HHs	# Settl	# HHs	% HHs
1	45	1940	5%	7	222	3%	5	117	1%	7	140	2%
2	39	496	1%	3	27	0%	5	46	1%	3	35	0%
3	12	1008	3%	3	142	2%	1	50	1%	4	455	6%
4	49	3055	9%									
5	14	1582	4%	1	150	2%				12	492	7%
6	74	1474	4%	21	257	3%	3	45	1%	17	172	2%
7	32	494	1%				1	10	0%	2	30	0%
8	76	1955	6%	3	163	2%	2	49	1%	4	99	1%
9	49	1986	6%	16	338	4%	8	149	2%	6	189	3%
10	174	2479	7%	25	411	5%	28	670	8%	1	5	0%
11	172	2139	6%	29	262	3%	45	411	5%	36	371	5%
12	18	2352	7%	11	244	3%	8	253	3%	36	694	10%
13	23	1168	3%	7	232	3%	9	256	3%	12	197	3%
14	12	417	1%	10	574	8%	35	3664	46%	13	397	6%
15	9	1739	5%	2	715	9%	1	67	1%	11	97	1%
16	26	561	2%	7	1339	18%	7	57	1%	40	529	8%
17	27	944	3%	25	834	11%	5	124	2%	26	773	11%
18	59	3918	11%	9	279	4%	36	1268	16%	27	1093	16%
19	19	102	0%	3	24	0%	4	22	0%	14	101	1%
20	29	253	1%	4	48	1%	3	25	0%	2	17	0%
21	20	790	2%	8	297	4%	5	164	2%	9	517	7%
22	19	795	2%	7	639	8%	3	130	2%	8	215	3%
23	15	342	1%	3	78	1%	3	110	1%	6	259	4%
24	51	1768	5%	3	160	2%	3	132	2%			
25	20	220	1%	3	62	1%	3	63	1%			
26	12	274	1%	1	14	0%				13	144	2%
27	42	1153	3%	2	85	1%	1	67	1%	1	10	0%
Total	1137	35404	100%	213	7596	100%	224	7949	100%	310	7031	100%

Aggregated Information of the Poverty Indicators by Ward, Narayanganj

Table 14: Employment status by ward

Ward	Employment											
	Critical Dev. (score 1)			Very Low Dev. (score 2)			Medium Dev. (Score 3)			High Devt. (score 4)		
	# Settl	# HHs	% HHs	# Settl	# HHs	% HHs	# Settl	# HHs	% HHs	# Settl	# HHs	% HHs
1	5	355	6%	17	652	4%	23	846	4%	19	566	5%
2	19	211	4%	9	139	1%	15	199	1%	7	55	0%
3				2	165	1%	2	117	0%	16	1373	11%
4	1	42	1%	7	699	4%	38	2215	9%	3	99	1%
5				1	135	1%	17	1698	7%	9	391	3%
6	44	937	17%	26	530	3%	10	131	1%	35	350	3%
7	6	46	1%	3	65	0%	16	241	1%	10	182	2%
8				9	158	1%	25	903	4%	51	1205	10%
9	13	225	4%	24	758	4%	10	596	3%	32	1083	9%
10	47	781	14%	85	1104	6%	88	1582	7%	8	98	1%
11	15	294	5%	26	205	1%	116	1350	6%	125	1334	11%
12	9	319	6%	3	1650	10%	42	828	4%	19	746	6%
13	1	10	0%	3	290	2%	14	704	3%	33	849	7%
14	1	43	1%	39	1890	11%	30	3119	13%			
15	3	183	3%	3	921	5%	6	607	3%	11	907	8%
16	9	695	13%	15	926	5%	43	721	3%	13	144	1%
17	8	279	5%	41	1306	8%	24	836	4%	10	254	2%
18	5	200	4%	52	3724	22%	61	2074	9%	13	560	5%
19	13	70	1%	5	24	0%	12	82	0%	10	73	1%
20	18	130	2%	6	55	0%	12	136	1%	2	22	0%
21	1	95	2%	16	596	4%	21	899	4%	4	178	1%
22	1	125	2%	3	73	0%	23	1094	5%	10	487	4%
23				2	108	1%	20	589	3%	5	92	1%
24				11	221	1%	39	1548	7%	7	291	2%
25	6	71	1%	9	109	1%	7	120	1%	4	45	0%
26	5	70	1%	3	28	0%	2	25	0%	16	309	3%
27	12	281	5%	17	477	3%	8	253	1%	9	304	3%
Total	242	5462	100%	437	17008	100%	724	23513	100%	481	11997	100%

Aggregated Information of the Poverty Indicators by Ward, Narayanganj

Table 15: Income status by ward

Ward	Income											
	Critical Dev. (score 1)			Very Low Dev. (score 2)			Medium Dev. (Score 3)			High Devt. (score 4)		
	# Settl	# HHs	% HHs	# Settl	# HHs	% HHs	# Settl	# HHs	% HHs	# Settl	# HHs	% HHs
1	36	1505	11%	15	573	3%	10	245	2%	3	96	1%
2	14	128	1%	13	217	1%	14	195	2%	9	64	1%
3	10	793	6%	5	492	2%	3	165	1%	2	205	2%
4	1	30	0%	42	2682	13%	6	343	3%			
5	1	56	0%	2	140	1%	15	1586	13%	9	442	4%
6	53	932	7%	42	760	4%	8	135	1%	12	121	1%
7	16	172	1%	3	21	0%	15	296	2%	1	45	0%
8	2	36	0%	11	173	1%	25	896	7%	47	1161	10%
9	18	649	5%	3	73	0%	13	485	4%	45	1455	13%
10	48	776	5%	79	987	5%	96	1765	14%	5	37	0%
11	98	1254	9%	4	26	0%	23	292	2%	157	1611	14%
12	26	409	3%	19	2185	11%	18	367	3%	10	582	5%
13	4	635	4%	1	5	0%	6	106	1%	40	1107	10%
14				59	4649	23%	11	403	3%			
15	13	1022	7%	4	202	1%	1	7	0%	5	1387	12%
16	21	1243	9%	13	652	3%	18	197	2%	28	394	3%
17	48	1492	11%	24	887	4%	8	267	2%	3	29	0%
18	18	815	6%	48	3069	15%	56	2410	19%	9	264	2%
19	18	93	1%	3	17	0%	7	60	0%	12	79	1%
20	17	136	1%	12	82	0%	7	101	1%	2	24	0%
21	12	854	6%	12	381	2%	11	465	4%	7	68	1%
22	6	80	1%	7	237	1%	6	166	1%	18	1296	11%
23				3	102	1%	19	588	5%	5	99	1%
24	13	855	6%	20	594	3%	23	558	4%	1	53	0%
25	5	30	0%	13	229	1%	2	31	0%	6	55	0%
26							7	64	1%	19	368	3%
27	5	165	1%	23	649	3%	8	231	2%	10	270	2%
Total	503	14160	100%	480	20084	100%	436	12424	100%	465	11312	100%

Aggregated Information of the Poverty Indicators by Ward, Narayanganj

Table 16: Status of social problem by ward

Ward	Social Problem											
	Critical Dev. (score 1)			Very Low Dev. (score 2)			Medium Dev. (Score 3)			High Devt. (score 4)		
	# Settl	# HHs	% HHs	# Settl	# HHs	% HHs	# Settl	# HHs	% HHs	# Settl	# HHs	% HHs
1	3	120	1%	11	439	5%	29	1140	5%	21	720	7%
2	11	84	0%	16	178	2%	14	189	1%	9	153	2%
3	9	773	5%	2	117	1%	3	195	1%	6	570	6%
4							48	3020	14%	1	35	0%
5	18	1771	10%	1	82	1%	5	292	1%	3	79	1%
6	61	1290	8%	29	315	4%	7	111	1%	18	232	2%
7	11	208	1%				15	184	1%	9	142	1%
8	3	72	0%	1	20	0%	20	471	2%	61	1703	17%
9	22	1081	6%	18	485	6%	26	579	3%	13	517	5%
10	56	918	5%	41	581	7%	123	1965	9%	8	101	1%
11	58	821	5%	40	451	5%	116	1257	6%	68	654	7%
12	1	1500	9%	9	316	4%	22	693	3%	41	1034	10%
13	5	652	4%	10	196	2%	23	709	3%	13	296	3%
14	3	162	1%	27	1807	21%	40	3083	14%			
15	6	1617	9%	3	693	8%	3	200	1%	11	108	1%
16	10	1096	6%	5	567	6%	44	568	3%	21	255	3%
17	17	627	4%	21	788	9%	38	1172	5%	7	88	1%
18	20	2426	14%	6	292	3%	48	2018	9%	57	1822	18%
19	5	28	0%	6	31	0%	1	5	0%	28	185	2%
20	14	136	1%	9	79	1%	12	114	1%	3	14	0%
21	5	309	2%	18	939	11%	17	501	2%	2	19	0%
22	11	257	1%	2	38	0%	17	1269	6%	7	215	2%
23	3	88	1%	3	98	1%	15	372	2%	6	231	2%
24	10	331	2%	6	170	2%	27	1300	6%	14	259	3%
25	6	65	0%	4	36	0%	9	183	1%	7	61	1%
26	15	269	2%	2	27	0%	6	113	1%	3	23	0%
27	17	466	3%	3	55	1%	13	417	2%	13	377	4%
Total	400	17167	100%	293	8800	100%	741	22120	100%	450	9893	100%

Aggregated Information of the Poverty Indicators by Ward, Narayanganj

Table 17: Status of schooling by ward

Ward	School Attendance											
	Critical Dev. (score 1)			Very Low Dev. (score 2)			Medium Dev. (Score 3)			High Devt. (score 4)		
	# Settl	# HHs	% HHs	# Settl	# HHs	% HHs	# Settl	# HHs	% HHs	# Settl	# HHs	% HHs
1	6	246	5%	9	274	1%	24	853	4%	25	1046	7%
2	4	30	1%	21	205	1%	18	310	2%	7	59	0%
3							4	345	2%	16	1310	9%
4	8	469	9%	21	1457	8%	17	1008	5%	3	121	1%
5	1	135	3%	8	651	4%	4	270	1%	14	1168	8%
6	28	545	11%	39	936	5%	18	163	1%	30	304	2%
7	1	8	0%	2	70	0%	14	281	1%	18	175	1%
8	2	29	1%	7	210	1%	44	1231	6%	32	796	5%
9	18	363	7%	23	727	4%	20	926	5%	18	646	4%
10	51	872	17%	65	775	4%	110	1880	10%	2	38	0%
11	12	232	5%	32	368	2%	75	780	4%	163	1803	12%
12	2	135	3%	5	1700	9%	13	367	2%	53	1341	9%
13	4	58	1%	4	104	1%	21	1129	6%	22	562	4%
14	1	58	1%	45	3023	16%	24	1971	10%			
15	4	367	7%	2	254	1%	2	636	3%	15	1361	9%
16	12	746	15%	20	1016	5%	42	652	3%	6	72	0%
17	3	140	3%	9	289	2%	50	1625	8%	21	621	4%
18	14	440	9%	47	3922	21%	45	1556	8%	25	640	4%
19	2	10	0%	13	71	0%	20	142	1%	5	26	0%
20	8	54	1%	18	172	1%	5	68	0%	7	49	0%
21	1	5	0%	20	1233	7%	13	452	2%	8	78	1%
22	1	35	1%	1	125	1%	20	626	3%	15	993	7%
23				4	163	1%	9	316	2%	14	310	2%
24	1	33	1%	6	156	1%	29	1437	7%	21	434	3%
25				6	50	0%	11	200	1%	9	95	1%
26	5	68	1%	1	13	0%	6	82	0%	14	269	2%
27	1	10	0%	23	626	3%	8	328	2%	14	351	2%
Total	190	5088	100%	451	18590	100%	666	19634	100%	577	14668	100%

Aggregated Information of the Poverty Indicators by Ward, Narayanganj

Table 18: Land tenure status by ward

Ward	Land Tenure											
	Critical Dev. (score 1)			Very Low Dev. (score 2)			Medium Dev. (Score 3)			High Devt. (score 4)		
	# Settl	# HHs	% HHs	# Settl	# HHs	% HHs	# Settl	# HHs	% HHs	# Settl	# HHs	% HHs
1	3	166	1%				9	232	2%	52	2021	8%
2	5	108	1%	7	56	1%	9	83	1%	29	357	1%
3	1	180	1%	2	37	1%				17	1438	6%
4				2	182	4%	27	2057	17%	20	816	3%
5	3	745	5%	7	549	11%	1	60	0%	16	870	3%
6	40	1090	7%	1	18	0%	3	59	0%	71	781	3%
7	5	38	0%	4	104	2%	3	97	1%	23	295	1%
8				6	225	4%	24	497	4%	55	1544	6%
9	4	157	1%	13	428	8%	22	645	5%	40	1432	6%
10	65	1086	7%	63	852	16%	47	1051	9%	53	576	2%
11	152	1632	10%	48	529	10%	45	560	5%	37	462	2%
12	5	1612	10%	5	95	2%	13	368	3%	50	1468	6%
13	5	663	4%	1	20	0%	8	221	2%	37	949	4%
14	2	108	1%	10	446	9%	51	3282	27%	7	1216	5%
15	9	2272	14%	1	57	1%	1	187	2%	12	102	0%
16	10	1523	10%	13	196	4%	8	163	1%	49	604	2%
17	18	435	3%	8	290	6%	11	305	3%	46	1645	7%
18	35	2906	18%	3	192	4%	5	327	3%	88	3133	13%
19	12	65	0%				5	32	0%	23	152	1%
20	16	163	1%	10	73	1%	5	45	0%	7	62	0%
21	2	15	0%	3	274	5%	7	344	3%	30	1135	5%
22	10	263	2%	4	167	3%	1	30	0%	22	1319	5%
23	4	58	0%	3	108	2%	2	76	1%	18	547	2%
24	1	8	0%	3	69	1%	10	357	3%	43	1626	7%
25	2	32	0%	2	10	0%	11	173	1%	11	130	1%
26	7	206	1%				3	40	0%	16	186	1%
27	7	214	1%	7	217	4%	28	820	7%	4	64	0%
Total	423	15745	100%	226	5194	100%	359	12111	100%	876	24930	100%

Aggregated Information of the Poverty Indicators by Ward, Narayanganj

Table 19: Housing condition by ward

Ward	Housing											
	Critical Dev. (score 1)			Very Low Dev. (score 2)			Medium Dev. (Score 3)			High Devt. (score 4)		
	# Settl	# HHs	% HHs	# Settl	# HHs	% HHs	# Settl	# HHs	% HHs	# Settl	# HHs	% HHs
1	9	366	2%	13	557	5%	13	461	4%	29	1035	8%
2	15	258	1%	18	186	2%	8	85	1%	9	75	1%
3	10	840	4%	5	220	2%	1	105	1%	4	490	4%
4	42	2815	12%	7	240	2%						
5	3	817	4%	7	599	6%	7	446	4%	10	362	3%
6	78	1498	6%	3	77	1%	19	214	2%	15	159	1%
7	12	94	0%	2	74	1%	2	41	0%	19	325	2%
8	3	141	1%	6	139	1%	20	342	3%	56	1644	12%
9	6	327	1%	11	542	5%	20	894	8%	42	899	7%
10	64	1099	5%	51	694	7%	47	1108	10%	66	664	5%
11	221	2564	11%	54	525	5%	6	50	0%	1	44	0%
12	17	1795	8%	19	616	6%	15	499	5%	22	633	5%
13	5	683	3%	10	213	2%	20	432	4%	16	525	4%
14	20	780	3%	34	2156	21%	16	2116	19%			
15	14	2349	10%				4	57	1%	5	212	2%
16	20	1628	7%	23	473	5%	12	109	1%	25	276	2%
17	26	640	3%	6	206	2%	20	769	7%	31	1060	8%
18	37	2917	13%	21	915	9%	34	1179	11%	39	1547	11%
19	20	147	1%	13	65	1%	6	32	0%	1	5	0%
20	25	197	1%	6	87	1%	4	44	0%	3	15	0%
21	2	16	0%	4	462	5%	12	565	5%	24	725	5%
22	7	233	1%	13	431	4%	8	462	4%	9	653	5%
23	6	138	1%	7	181	2%	9	299	3%	5	171	1%
24	7	165	1%	9	189	2%	15	418	4%	26	1288	9%
25	6	45	0%	1	5	0%	6	55	1%	13	240	2%
26	14	268	1%	5	91	1%	2	15	0%	5	58	0%
27	19	388	2%	5	200	2%	4	166	2%	18	561	4%
Total	708	23208	100%	353	10143	100%	330	10963	100%	493	13666	100%

Aggregated Information of the Poverty Indicators by Ward, Narayanganj

Table 20: Risk of eviction by ward

Ward	Risk of eviction											
	Critical Dev. (score 1)			Very Low Dev. (score 2)			Medium Dev. (Score 3)			High Devt. (score 4)		
	# Settl	# HHs	% HHs	# Settl	# HHs	% HHs	# Settl	# HHs	% HHs	# Settl	# HHs	% HHs
1	2	105	1%	1	50	1%	8	172	1%	53	2092	7%
2	3	17	0%	7	128	2%	6	53	0%	34	406	1%
3	2	192	2%	1	25	0%				17	1438	5%
4							40	2628	22%	9	427	2%
5	1	600	5%	9	626	11%	2	159	1%	15	839	3%
6	50	1105	9%	4	107	2%				61	736	3%
7	6	46	0%	4	146	3%	8	98	1%	17	244	1%
8	2	56	0%	3	185	3%	7	153	1%	73	1872	7%
9	1	80	1%	9	402	7%	17	597	5%	52	1583	6%
10	28	525	4%	27	604	10%	31	722	6%	142	1714	6%
11	163	1772	15%	48	527	9%	9	56	0%	62	828	3%
12	2	1524	13%	5	216	4%	24	600	5%	42	1203	4%
13	5	703	6%				6	124	1%	40	1026	4%
14	1	58	0%	9	1041	18%	38	1719	14%	22	2234	8%
15	4	846	7%	1	19	0%	7	1605	13%	11	148	1%
16	6	1003	8%	8	137	2%	8	599	5%	58	747	3%
17	2	105	1%	20	515	9%	8	248	2%	53	1807	6%
18	34	2925	24%	5	239	4%	1	20	0%	91	3374	12%
19	11	59	0%	2	13	0%	2	12	0%	25	165	1%
20	17	151	1%	13	117	2%	1	13	0%	7	62	0%
21				2	105	2%	9	412	3%	31	1251	4%
22	2	43	0%	4	210	4%	16	974	8%	15	552	2%
23	2	54	0%	2	63	1%				23	672	2%
24	2	18	0%	3	69	1%	21	686	6%	31	1287	5%
25				1	10	0%	7	51	0%	18	284	1%
26	5	68	1%	1	70	1%				20	294	1%
27	3	108	1%	11	190	3%	6	230	2%	26	787	3%
Total	354	12163	100%	200	5814	100%	282	11931	100%	1048	28072	100%

Aggregated Information of the Poverty Indicators by Ward, Narayanganj

Table 21: Land ownership by ward

Ward	Land Ownership (NO DATA)											
	Critical Dev. (score 1)			Very Low Dev. (score 2)			Medium Dev. (Score 3)			High Devt. (score 4)		
	# Settl	# HHs	% HHs	# Settl	# HHs	% HHs	# Settl	# HHs	% HHs	# Settl	# HHs	% HHs
1												
2												
3												
4												
5												
6												
7												
8												
9												
10												
11												
12												
13												
14												
15												
16												
17												
18												
19												
20												
21												
22												
23												
24												
25												
26												
27												
Total												

Aggregated Information of the Poverty Indicators by Ward, Narayanganj

Table 22: Occupancy status by ward

Ward	Occupancy (NO DATA)											
	Critical Dev. (score 1)			Very Low Dev. (score 2)			Medium Dev. (Score 3)			High Devt. (score 4)		
	# Settl	# HHs	% HHs	# Settl	# HHs	% HHs	# Settl	# HHs	% HHs	# Settl	# HHs	% HHs
1												
2												
3												
4												
5												
6												
7												
8												
9												
10												
11												
12												
13												
14												
15												
16												
17												
18												
19												
20												
21												
22												
23												
24												
25												
26												
27												
Total												